



BMC-335EHY

Self Propelled Scarifier



BMC-335EHY

Self Propelled Scarifier

The Blastrac BMC-335 shaver is a heavy-duty machine designed and manufactured for the most demanding of jobs. With variable speed, forward and reverse, this heavy-weight performer can be maneuvered or driven without having the shaving drum engaged. An easy-lift system lowers and raises the drum, and fine-height cutting adjustments stay in position with controls that are easily accessible to the operator. These units are comfortable to use, easy to move and create minimal vibrations.



WORKING WIDTH:
13 IN



WEIGHT:
895 LB



CONCRETE /
STONE /
ASPHALT



POWER:
15 HP | 460V, (32A), 3Ø



DRUM RPM:
3600 RPM



TYPE:
FORWARD



PRODUCTION:
UP TO 570 SQ. FT./HR



DIMENSIONS:
L 59 IN X W 24 IN X H 38 IN

Dust Collector Option(s)

Key Points

- Versatile tooling options for job specific applications
- Self propelled, variable speed forward and reverse
- Safely drive without drum engaged



BDC-33



BDC-44

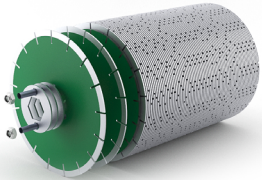




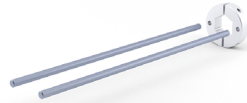
BMC-335EHY

Self Propelled Scarifier

BMC-335EHY OPTIONS



SHAVING DRUM COMPLETE
E12023



GROOVING DRUM
E06078



DIAMOND SHAVING BLADE
E08714