



Made in America Since 1968

2021 CATALOG





Dear Friends and Partners,

The last 12 months have been full of ups and downs. We have seen our communities and economies hurt deeply by things we cannot control. In the past, we have looked at this communication as a roll out of new products, strategies, and opportunities. This time, I would rather discuss rebuilding construction in the United States, Europe, Asia, Australia, and the entire global economy.

So, welcome to the 2021 National Flooring Equipment catalog and solutions offering.

This year we launched a revolutionary new deck scraper called the Viking. This equipment easily removes the toughest, weather beaten highway, bridges, and industrial surfaces around the world. This cross-cultural collaboration shows what hard work and innovation can accomplish.

We have also launched a new air cleaning solution called Ion Clean Air. Ion Clean Air provides portable machines that are proven solutions to pulling airborne pathogens out of our living spaces and destroying the contagious qualities.

A decade ago, NFE set out to be the surface prep manufacturer that is everything the competition isn't.

High Quality, Reliable, and Innovative

Today, our balancing act is to continue growing despite increasing competition while staying true to our values. There will always be a bigger guy trying to catch up with us, our job is to stay ahead.

This year our focus is on time. We love spending time with our partners and customers. We want to support you in your endeavors and business goals. Our promise is to always be where you are, working for you, building a future for all of us.

Derek Olson
President
National Flooring Equipment

For fast service on National Flooring Equipment products, contact:

Toll-Free: 800.245.0267 | **Local:** 763.315.5300 | **Email:** sales@nationalequipment.com

SURFACE PREPARATION SOLUTIONS

2

The National Difference

A letter from the president of National Flooring Equipment.

9

Walk-Behind Floor Scrapers

Our walk-behind scrapers exceed industry expectation and set unmatched standards for removal rates, durability, and safety.

14

Ride-On Floor Scrapers

Our ride-on scrapers are leaders in quality, technology, and innovation.

26

Floor Scraper Shanks and Blades

National's patented ride-on and walk-behind scraper blades are available in a variety of sizes to suit any application.

29

In The Work Bundles

National has put together machine and tooling bundles to help you determine the right tool for the job.

34

Grinders and Polishing Systems

Featuring National's patented magnetic tooling system, our grinders and polishers are the perfect solution for removing coatings, surface preparation, and polishing.

43

Burnishers

These high-speed burnishers produce a high-gloss finish.

46

Handheld Grinders

Handheld grinders offer the perfect solution for dustless surface preparation, edging, and hard-to-reach places.

50

Shot Blasters

Shot blasters strip, clean, and profile in a single time-saving step that leaves a surface profile ready for any coating or overlayment.

58

Scarifier

Designed for heavy-duty concrete removal, coating removal, overlayment and thin-set removal.

62

Dust Control & Dust Collectors

National offers the industry's leading performance dust collectors, safely containing the maximum amount of even the finest airborne particles.

70

Carpet Pullers

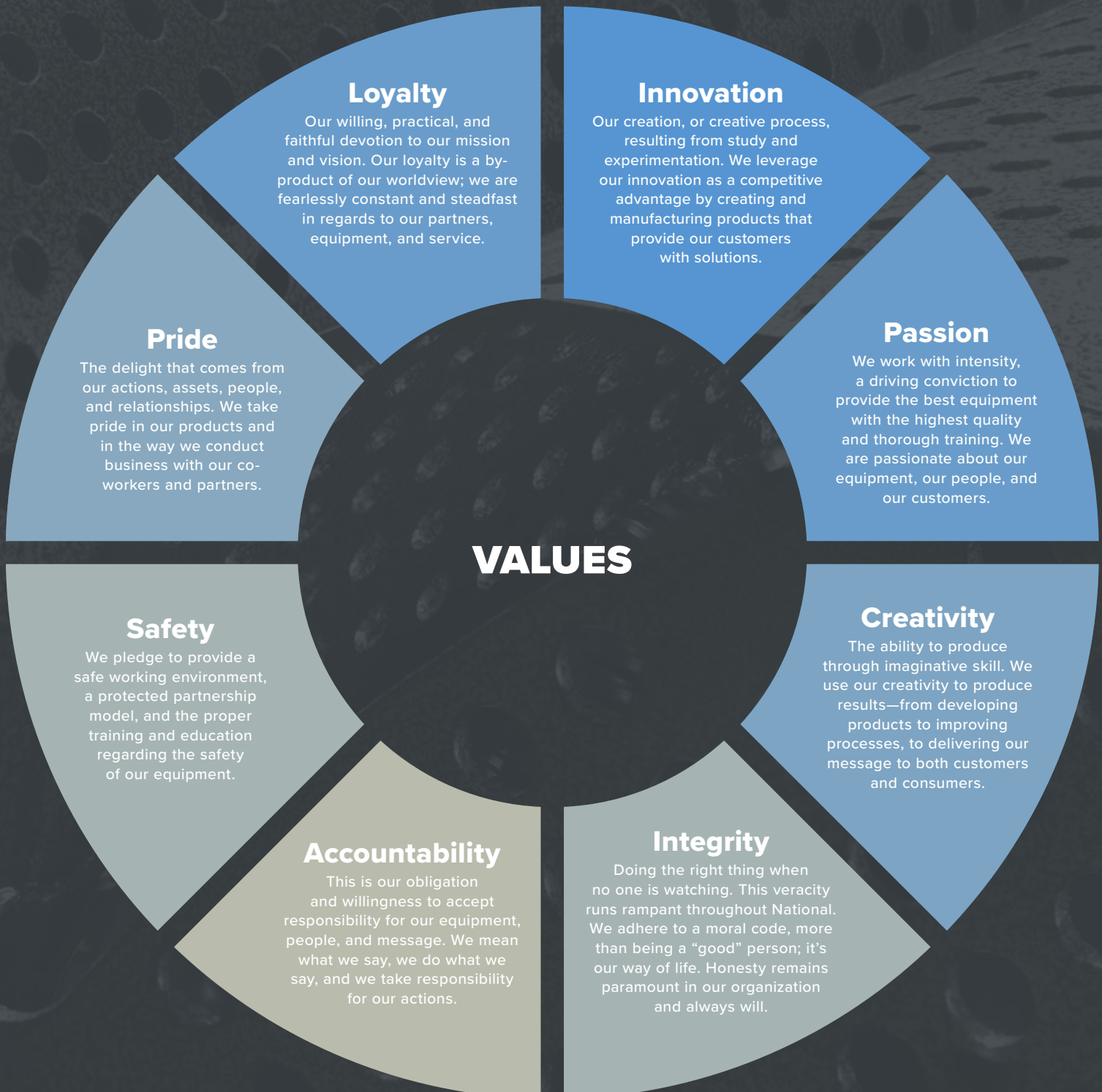
Heavy-duty carpet removal machines work on any type of direct-glued-down carpet, over any type of floor surface.

MISSION

National is a leader in surface preparation solutions and service across the world. We are a customer-centric organization dedicated to answering questions and building a partnership between all levels of our customers. This is equally matched with the best equipment and engineering support in the industry. Our loyalty is to our partners and we stand behind our equipment.

VISION

National's vision is to engineer and design surface preparation equipment of the highest quality, distinction, and value that delivers what our customers need, answering their questions and driving solutions in the marketplace. In doing this, we can continually define the industry standards for product quality, customer service, partner relationships, and technology innovation.



VIKING®





VIKING® Specifications		
Width	57.9"	147 cm
Length	122.5"	311 cm
Height	93.3"	237 cm
Weight	5,700 lbs.	2,586 kg
Power	49.5 HP Turbo Diesel Kubota	
Fuel Capacity	18 gallons	68 liters
Alternator	90 amps	



FEATURES

- A.** Dual windshields for increased workspace visibility
- B.** Use one, two, or three tooling holders to set the Viking® up for any jobsite
- C.** Features National's patented Dual-Lift technology for infinite blade adjustments from the safety of the cab
- D.** The positive-pressure, noise-dampening cab has been designed to meet Roll-Over Protection and Falling Object Protection Certifications (ISO 3471 & ISO 3499)
- E.** Extensive safety lighting includes forward- and rear-facing LED lights, red safety curtain, orange operator indication, green operation indication, and a blue safety arrow light
- F.** 2-Speed cab fan for increased airflow under warm conditions
- G.** Interior, red, night light illuminates the cab without glare when working in dark conditions
- H.** Climate controlled cab offers heat and air conditioning to ensure comfort during long days
- I.** Phone mount and USB outlet keeps your device charged and in close proximity
- J.** Cup holder ensures secure storage of your beverage around electrical components
- K.** Power and engine control interface for intuitive functionality
- L.** Emergency engine shut-off button
- M.** Rear-view camera display brings another level of safety to your jobsite and workers
- N.** Easy-to-use joystick controls offer precise handling and blade adjustment
- O.** Fully adjustable seat features reclining back, forward and back sliding adjustment, adjustable arm rests, and a seat belt



National Flooring Equipment has been engineering and manufacturing the industry's most productive and reliable floor scrapers for over 50 years. Our scrapers exceed industry expectations and set unmatched standards for removal rates, durability, and safety.



**ELECTRIC
POWER**



**BATTERY
POWER**



**PROPANE
POWER**

FLOOR SCRAPERS

For the most updated information, please refer to our website, nationalequipmentdirect.com

TROLLEY

TROLLEY-EUR, TROLLEY-UK

Give your hands and back a break and let the Power Hammer Trolley make you faster, more efficient, and productive. This machine works as a floor stripper and scraper on concrete and wood surfaces. Great for removal of epoxy, ceramic tile, vinyl, VCT, cork, adhesives, mastic, and more. The Power Hammer Trolley is perfect for rock breaking and block demolition. Hammer sold separately.

TROLLEY : fits Hilti TE1000 and Hilti TE1500 and Bosch 11335K



Trolley Specifications

Width	19"	48 cm
Height	44"	111.8 cm
Length	24"	61 cm
Weight	99 lb	45 kg

**All measurements reflect the folded dimensions of the Trolley. Power hammer not included.*

SAFETY

A. Safety emergency switch

PERFORMANCE

- B.** Specially designed shock absorbing grips for increased operator comfort
- C.** Easy-to-reach knob for quick adjustments of the operator's handle

COMFORT

- D.** Adjustable knob creates 5 different angles to change the height of the tool without impacting the height of the handle
- E.** Large, solid tires wear well, perform consistently over rough surfaces, and won't lose pressure
- F.** Rugged steel frame is durable and built to last



550

WALK-BEHIND SCRAPER

550-EUR, 550-UK, 550-AUS, 550-SIN, 550-BOL, 550-HER, 550-SUN, 550-ROM



The 550 is ideal for residential work and tight, confined spaces on commercial jobs. The accelerated RPM orbital cutting action delivers an efficient and operator-friendly machine. With decibel ratings under industry and safety standards, this machine is a must-have.

550 Specifications

Power Supply	Electric	
Width	17.75"	45 cm
Max. Height	42.5"	108 cm
Height (without handle)	21"	53 cm
Max. Length	32.5"	83 cm
Weight	123 lb	55.8 kg
Removable Weight	44 lb	20 kg
Weight (machine only)	79 lb	35.8 kg
Speed	Manual	
RPM	1725	1425
Voltage	115	230
Frequency	60 Hz	50 Hz
HP	1	.746 kW
Amps (full load)	14	7
Noise Emission	73 dB	

SAFETY

A. Kickplate/footbar provides additional leverage to glide through material and reduce back stress

PERFORMANCE

B. Adjustable height and removable handle; easily condenses for transport in any size vehicle

COMFORT

C. Angle-adjustment wheel changes pitch of the blade in seconds

D. 1 HP motor with industrial-grade shaft has powerful torque for removing tough applications

E. Removable front weight provides additional down pressure and facilitates easy loading/unloading

F. Orbital cutting action rotates the blade to cut through a range of materials over various substrates; extends life cycle of machine while reducing maintenance costs

REMOVES THE FOLLOWING MATERIALS:

- Linoleum
- VCT
- Ceramic Tile
- Adhesives
- Rubber-backed carpet
- Glued-down carpet
- Coatings
- Plastic floor coverings
- Foam
- Plastic droppings
- Parquet flooring
- Chewing gum
- Indoor/outdoor felt
- Ice
- Accumulated grime
- Paint from floors
- Rubber and vinyl tile
- Roofing

INCLUDED WITH THE 550

- 551 Angle Shank Holder
- 552 2" x 4" Angle Shank
- Kit 5170 includes :
 - 147 4" x 6" blade
 - 6285 3" x 6" Heavy-duty blade
 - 7050-202 3" x 10" Premium High Tempered Blade
- 5280-137W: 6mm T-Handle Wrench
- Operating and Service Manuals
- One-year manufacturer's warranty on parts and labor

RECOMMENDED ACCESSORIES

6280-505

- Swivel head rotates to allow continuous contact with the floor

6280-500

- Swivel head allows for continuous contact with the floor and is specifically for razor blades



5280

WALK-BEHIND SCRAPER

5280-AUS, 5280-EUR, 5280-UK, 5280-HER, 5280-INT, 5280-KTU, 5280-ROM



This hydraulically driven, forward self-propelled scraper removes the worst of today's soft goods, such as glued-down floors, gummy commercial carpet, VCT, sheet vinyl, rubber tile, linoleum, indoor and outdoor sport surfaces, roofing material, and more. The ergonomic features of this machine reduce operator fatigue while optimizing time and labor savings. The compact design makes it ideal for use in tight spaces.

5280 Specifications

Power Supply	Electric	
Width	17"	43 cm
Height	39"	99 cm
Length	27"	69 cm
Weight	263 lbs	119 kg
Removable Weight	37 lb front, 49 lb saddle	16.8 kg front, 22.2 kg saddle
Weight (machine only)	177 lb	80.3 kg
Speed	12-50 ft/min	3.7-15.2 m/min
RPM	1725	1425
Voltage	115	230
Frequency	60 Hz	50 Hz
HP	1	.746 kW
Amps (full load)	12	6.7
Noise Emissions	77 dB	
Meets the requirements of the Machine Directive 2006/42/EC and EMC Directive 2004/18/EC. It is CE marked.		

SAFETY

A. Tie-down/lifting bail

PERFORMANCE

B. Forward self-propelled control

COMFORT

C. Variable speed, 12 to 50 feet per minute

D. Self-contained, limited-maintenance hydraulic fluid

E. Removable 49-pound saddle weight helps increase or decrease down pressure and traction

F. Orbital action rotates the cutting blade to cut through a range of materials over various substrates; extends life cycle of machine while reducing maintenance costs

INCLUDED WITH THE 5280

- Kit 5173 includes:
 - 148 5" x 6" blade
 - 6258-BU 3" x 12" self-scoring blade
 - 6286 3" x 10" heavy-duty blade
 - 7050-200 3" x 6" premium high-tempered blade
- 7050-202 3" x 10" premium high-tempered blade
- 5280-137W: 6mm T-handle wrench
- Operating and Service Manuals
- One-year manufacturer's warranty on parts and labor

RECOMMENDED ACCESSORIES

6280-505

- Swivel head rotates to allow continuous contact with the floor

6280-500

- Swivel head allows for continuous contact with the floor and is specifically for razor blades



6280 Commander®

HYDRAULIC WALK-BEHIND SCRAPER

6280-AUS, 6280-EUR, 6280-JPN, 6280-UK, 6280-BOL, 6280-HER, 6280-INT, 6280-KTU, 6280-SUN, 6280-ROM



The Commander removes the worst of today's soft goods, such as glued-down floors, gummy commercial carpet, VCT, sheet vinyl, rubber tile, linoleum, indoor and outdoor sport surfaces, roofing material, and more.

6280 Specifications

Power Supply	Electric	
Width	17.75"	45 cm
Max. Height	46"	117 cm
Height (handle folded)	30"	76 cm
Max. Length	51"	130 cm
Length (handle folded)	29"	74 cm
Weight	425 lb	192.8 kg
Removable Weight	47 lb front, 43 lb side	21.3 kg front, 19.5 kg side
Weight (machine only)	335 lb	152 kg
Speed	10-45 ft/min	3.0-13.7 m/min.
RPM	3450/2875	
Voltage	115	230
Frequency	60 Hz	50 Hz
HP	1.5	1.12 kW
Amps (full load)	13	7.5
Noise Emission	79 dB	
Meets the requirements of the Machine Directive 2006/42/EC and EMC Directive 2004/108/EC. It is CE marked.		

SAFETY

- A.** Front-weight design better deflects loose material away from machine during use
- B.** Tie-down/lifting bail

COMFORT

- C.** Ergonomically designed, adjustable-position hand grips; hydraulic self-propelled forward and reverse; variable speed, 10 to 45 feet per minute; manual drive system for throttle/speed control and smooth transitions.
- D.** Six handle positions for work under counters and other confined areas; collapses to save space during transport and storage.

PERFORMANCE

- E.** Secure-mount side slide weights adjust head pressure; slide the weights back to increase weight over drive wheels.
- F.** Adjustable, self-cleaning, industrial-grade, siped wheels for improved traction over smooth or slippery surfaces; clip-pin removal allows for easy nonpowered maneuvering
- G.** Motor equipped with thermal-overload-protection circuit breaker that protects against strain or electrical overload
- H.** Orbital action rotates the cutting blade to cut through a range of materials over various substrates; extends life cycle of machine while reducing maintenance costs
- I.** Transport-wheel rack hanger on back of handle
- J.** Adjustable wheel scrapers prevent material buildup during operation

INCLUDED WITH THE 6280

- 6280-299 front wheel assembly
- Kit 5173 includes:
 - 148 5" x 6" blade
 - 6258-BU 3" x 12" self-scoring blade
 - 6286 3" x 10" heavy-duty blade
 - 7050-200 3" x 6" premium high-tempered blade
 - 7050-202 3" x 10" premium high-tempered blade
- 5280-137W 6mm T-handle wrench
- Operating and Service Manuals
- One-year manufacturer's warranty on parts and labor

RECOMMENDED ACCESSORIES

6280-505

- Swivel head rotates to allow continuous contact with the floor

6280-500

- Swivel head allows for continuous contact with the floor and is specifically for razor blades



6280HD Gladiator®

HYDRAULIC WALK-BEHIND SCRAPER

6280HD-EUR, 6280HD-JPN, 6280HD-UK, 6280HD-AUS, 6280HD-HER, 6280HD-KTU, 6280HD-SIN, 6280HD-SUN



The Gladiator removes the worst of today's hard and soft goods, such as ceramic tile, wood floors, thin-set, sheet vinyl, linoleum, and more. Its compact design makes it ideal for use in confined spaces, while the side slide weights add extra head pressure when forward and improved traction when moved over the back wheels.

6280HD Specifications

Power Supply	Electric	
Width	17.75"	45 cm
Max. Height	46.75"	119 cm
Height (handle folded)	30"	76 cm
Max. Length	49.5"	126 cm
Length (handle folded)	29.5"	75 cm
Weight	490 lb	222.3 kg
Removable Weight	78 lb front, 43 lb side	35.4 kg front, 19.5 kg side
Weight (machine only)	369 lb	167.4 kg
Speed	up to 30 ft/min	9.1 m / min
RPM	1725	1425
Voltage	115	230
Frequency	60 Hz	50 Hz
HP	1.5	1.12 kW
Amps (full load)	14.7	10.5
Noise Emission	77 dB	

Meets the requirements of the Machine Directive 2006/42/EC and EMC Directive 2004/108/EC. It is CE marked

SAFETY

- A.** Rounded front-weight design better deflects loose material away from machine during use
- B.** Tie down/lifting bails

COMFORT

- C.** Ergonomically designed, adjustable-position hand grips; hydraulic self-propelled forward and reverse; variable speed, 10 to 30 feet per minute; optional manual drive with removal of drive pins; system for throttle/speed control and smooth transitions
- D.** Six handle positions for work under racks and in other confined areas; collapses to save space during transport and storage

PERFORMANCE

- E.** Self-contained, limited-maintenance hydraulic fluid
- F.** Secure-mount side slide weights adjust scraper-head pressure; side slide weights add extra head pressure when forward and improved traction when moved over the back wheels
- G.** Adjustable, self-cleaning, industrial-grade, siped wheels for improved traction over smooth or slippery surfaces; clip-pin removal allows for easy nonpowered maneuvering
- H.** Motor equipped with thermal-overload-protection circuit breaker that protects against strain or electrical overload
- I.** Orbital action rotates the cutting blade to cut through a range of materials over various substrates; extends life cycle of machine while reducing maintenance costs
- J.** Design incorporates nine isolators for the toughest jobs

INCLUDED WITH THE 6280HD

- 6280HD-250 Transport Wheel Assembly 6280HD
- Kit 5174 includes :
 - 6258-BU: 90 degree, 3" x 12" self scoring, bevel up
 - 6265-BD: 90 degree, 3" x 8" self-scoring, bevel down
 - 6276-BU: 45 degree, 3" x 10" self-scoring, bevel up
 - 7050-200: 3" x 6" premium blade

- 7050-202: 3" x 10" premium blade
- 7050-203: 3" x 12" premium blade
- 7050-204: 3" x 14" premium blade
- 7280-12: 12" cutting head
- 7280-2C: 30-degree angle attachment
- 402276: 9-degree angle attachment

- 7280-4: retainer cap assembly
- 7280-6: 6" cutting head
- 7281-1: 1" x 6" angle shank w/ carbide shank
- Instruction manual
- One-year manufacturer's warranty on parts and labor



4230

RIDE-ON SCRAPER

4230ML-EUR, 4230-EUR



The 4230 is an electric ride-on floor scraper, specifically designed for our European customers. With no belts or gears, this scraper boasts low maintenance costs while maximizing production, maneuverability, and ease of transport.

4230 Specifications

Power Supply	Electric	
Width	24.5"	62.2 cm
Height	49"	124.5 cm
Length	63"	160 cm
Weight	1,590 lb	721.2 kg
Removable Weight	445 lb	201.9 kg
Weight (machine only)	1,145 lb	519.4 kg
Speed	up to 71 ft/min	up to 21.6 m/min
Voltage	230 V	
Frequency	50 Hz	
HP	(2) 1.5 HP motors	

**Measurements are without tooling attached.*

SAFETY

- A.** Automatic kill switch is triggered when the operator seat is vacant
- B.** Larger/deepened forklift pockets
- C.** E-stop switch for safety

COMFORT

- D.** Ergonomic design includes movable foot pegs and padded seat that allows for optimal operator comfort and the best possible line of sight

PERFORMANCE

- E.** Precise hydraulic steering for maneuvering in tight spaces, zero turn radius, and continuous torque for higher removal rates and greater productivity
- F.** Quick-change swivel head
- G.** Extra weight compartments
- H.** Nonmarking tires
- I.** Front caster wheels allow increased maneuverability in tight spaces
- J.** Work light for improved jobsite visibility

INCLUDED WITH THE 4320

- 5110-100: Transport Wheels
- Kit 5175 includes:
 - 6277-BU: 45 degree, 3" x 12" self-scoring, bevel up
 - 6284: 3" x 12" heavy-duty blade
 - 6285: 3" x 6" heavy-duty blade
 - 6286: 3" x 12" heavy-duty blade
 - 7050-12: 12" cutting head
 - 7050-6: 6" cutting head
 - 7079-2: 2" x 6" angle shank w/ carbide tip
- 402929: 3/4 x 1-1/8 Wrench
- Operating and Service Manuals



5110

RIDE-ON SCRAPER



The 5110 is an electric ride-on floor scraper designed for continuous operation. With no belts or gears, this scraper boasts low maintenance costs while maximizing production, maneuverability, and ease of transport.

5110 Specifications

Power Supply	Electric	
Width	24.5"	62.23 cm
Height	49"	124.46 cm
Max Height	56"	142 cm
Length	63"	160 cm
Weight	1,465 lb	664.5 kg
Removable Weight	370 lb front, 75 lb rear	167.8 kg front, 34 kg rear
Weight (machine only)	1,020 lb	462.6 kg
Speed	up to 113 ft/min	up to 34.4 m/min
Voltage	115	
Frequency	60 Hz	
HP	3 (2x1.5)	

THIS IS A SPECIAL ORDER MACHINE. Please contact your territory manager or our customer service department for more information and lead times.

SAFETY

- A. Automatic kill switch is triggered when the operator seat is vacant
- B. Larger/deepened forklift pockets
- C. E-stop switch for safety

COMFORT

- D. Ergonomic design includes movable foot pegs and padded seat that allows for optimal operator comfort and the best possible line of sight

PERFORMANCE

- E. Precise hydraulic steering for maneuvering in tight spaces, zero turn radius, and continuous torque for higher removal rates and greater productivity
- F. Quick-change swivel head
- G. Extra weight compartments
- H. Nonmarking tires
- I. Front debris deflector protects machine from loose material
- J. Front caster wheels allow increased maneuverability in tight spaces

INCLUDED WITH THE 5110

- 5110-100: Transport Wheels
- #402929: 3/4 x 1-1/8 Wrench
- 6254 (2): 50ft extension cords
- Operating and Service Manuals

- Kit 5175 includes:
 - 6277-BU: 45 degree, 3" x 12" self-scoring, bevel up
 - 6284: 3" x 12" heavy-duty blade
 - 6285: 3" x 6" heavy-duty blade
 - 6286: 3" x 12" heavy-duty blade

- 7050-12: 12" cutting head
- 7050-6: 6" cutting head
- 7079-2: 2" x 6" angle shank w/ carbide tip
- Operating and Service manuals
- One-year manufacturer's warranty on parts and labor



2900

RIDE-ON SCRAPER

2900-BOL, 2900DL, 2900-AKT



Designed specifically for high-speed soft goods removal, this machine is a durable, emission-free, budget-conscious workhorse. The 2900 will remove VCT and other soft and hard goods quickly and efficiently for time sensitive applications.

2900 Specifications		
Power Supply	Battery	
Width*	24.5"	62 cm
Height	46.5"	126 cm
Length*	55"	140 cm
Length* (2900DL)	60"	152.4 cm
Weight	1,730 lb	784.7 kg
Weight (2900DL)	1,863 lb	845 kg
Removable Weight	185 lb front, 75 lb rear	83.9 kg front, 34 kg rear
Weight (machine only)	1,470 lb	666.8 kg
Weight (machine only) (2900DL)	1,603 lb	727.1 kg
Speed	up to 160 ft/in	up to 48.8 m/min
Voltage	115	230
Frequency	60 Hz	50Hz

*Measurements are without tooling attached.

The 2900 is available with or without the Dual Lift. The Dual Lift feature adds operator controls for adjusting blade pitch and angle while remaining seated.

SAFETY

- A. Automatic kill switch is triggered when the operator seat is vacant
- B. E-stop knob for safety
- C. Larger/deepened forklift pockets
- D. Flip-up hood system for easy-access maintenance

COMFORT

- E. Ergonomic design includes movable foot pegs, taller handle, and padded seat that allows for optimal operator comfort and the best possible line of sight

PERFORMANCE

- F. Hydraulic steering for maneuvering in tight spaces, zero turn radius, and continuous torque for higher removal rates and greater productivity
- G. Quick-change swivel head
- H. Optional dual-lift, hydraulic slide plate adjusts blade pitch and angle for continuous contact with the floor
- I. Nonmarking tires
- J. AGM (Absorbed Glass Mat) batteries provide 100 percent power, speed, and torque for 90 percent of the batteries' run cycle
- K. Compact design fits through standard door frames and elevator doors
- L. Front debris deflector protects machine from loose material
- M. Front caster wheels allow increased maneuverability in tight spaces

INCLUDED WITH THE 2900

- 5110-100: Transport wheels
- 402929: 3/4 x 1-1/8 Wrench
- 73507-1: 7ft extension cord
- Operating and Service Manuals
- Kit 5176 include:
 - 6260-BD: 90 degree, 3" x 6" self-scoring, bevel down
 - 6277-BU: 45 degree, 3" x 12" self-scoring, bevel up
 - 6284: 3" x 12" heavy-duty blade
 - 6285: 3" x 6" heavy-duty blade
 - 6286: 3" x 10" heavy-duty blade
 - 7050-10: 10" cutting head
 - 7050-12: 12" cutting head
 - 7050-6: 6" cutting head
- One-year manufacturer's warranty on parts and labor



5200QL

RIDE-ON SCRAPER

5200QL-JPN

The 5200QL is designed for jobs that require continuous operation, and it offers the only slide-out replaceable battery in the industry with a rear-accessed battery pack that is easily installed, changed, and transported. With no belts or gears, this scraper boasts low maintenance costs while maximizing production. Great for commercial surface removal and preparation it is quiet and compact enough for residential jobs.



5200QL Specifications

Power Supply	Battery, 48V	
Width*	24.75"	63 cm
Height	46.5"	119 cm
Length*	57"	145 cm
Weight	1,760 lb	798.3 kg
Removable Weight	370 lb front, 75 lb rear	167.8 kg front, 34 kg rear
Weight (machine only)	1,315 lb	596.5 kg
Speed	up to 120 ft/min	up to 36.6 m/min
Voltage	115	100V
Frequency	60 Hz	50/60 Hz

*Measurements are without tooling attached

THIS IS A SPECIAL ORDER MACHINE. Please contact your territory manager or our customer service department for more information and lead times.

Additional carts, power packs and chargers are available for purchase if you require longer run times.

SAFETY

- A.** Automatic kill switch triggered when the operator seat is vacant.
- B.** E-stop knob for safety

COMFORT

- C.** Ergonomic design includes movable foot pegs and padded seat that allows for optimal operator comfort and the best possible line of sight.

PERFORMANCE

- D.** Precise hydraulic steering for maneuvering in tight spaces, zero turn radius
- E.** Quick-change swivel head
- F.** Extra weight compartments
- G.** Larger/deepened forklift pockets
- H.** Nonmarking tires
- I.** Trailer hitch
- J.** Flip-up back lid for quick and easy battery changing
- K.** Front debris deflector protects machine from loose material
- L.** Front caster wheels allow increased maneuverability in tight spaces

INCLUDED WITH THE 5200QL

- 5110-100: Transport Wheels
- 402929: 3/4 x 1-1/8 Wrench
- 5200QL-500: Quick-load battery cart
- Operating and Service Manuals

- Kit 5175 includes:
- 6277-BU: 45 degree, 3" x 12" self-scoring, bevel up
- 6284: 3" x 12" heavy-duty blade
- 6285: 3" x 6" heavy-duty blade
- 6286: 3" x 10" heavy-duty blade

- 7050-12: 12" cutting head
- 7050-6: 6" cutting head
- 7079-2: 2" x 6" angle shank w/ carbide tip
- One-year manufacturer's warranty on parts and labor



5000

RIDE-ON SCRAPER

5000-BOL, 5000-UK, 5000-EUR, 5000DL

The 5000 is a compact, ride-on floor scraper designed with a low-profile frame that increases ease of transport and maneuverability on the job.



5000 Specifications

Power Supply	Battery 48V	
Width*	24.5"	62 cm
Height*	48"	121.9 cm
Length*	63"	160 cm
Weight*	2,105 lb	954.8 kg
Removable Weight	445 lb	201.8 kg
Speed	up to 160 ft/min	up to 48.8 m/min
Voltage & Frequency	115V/60Hz	230V/50Hz

*Measurements are without tooling attached.

SAFETY

- A. E-stop knob for on-the-job safety
- B. Auto-stop feature kills machine when operator is not in seat

COMFORT

- C. Adjustable arm rests, seat and foot pegs for a balanced, comfortable ride

PERFORMANCE

- D. Front debris deflector protects the machine from loose material
- E. Dual-lift hydraulic slide plate adjusts blade pitch and angle for continuous contact with the floor

- F. Six AGM (Absorbed Glass Mat) 200-amp batteries
- G. Quick-change swivel head blade holder
- H. Precise hydraulic steering for maneuvering in tight spaces, zero turn radius, and continuous torque for higher removal rates and greater productivity
- I. Compact design fits through door frames and elevator doors; removing the weights allows the 5000 to meet the maximum standard elevator weight restrictions
- J. LED light for increased visibility on the jobsite
- K. IEC 320 - universal plug allows replacement charger cords to be supplied from any country

INCLUDED WITH THE 5000

- 5110-100: Transport
- 402929: 3/4 x 1-1/8 Wrench
- Operating and Service Manuals
- Kit 5176 includes:
 - 6260-BD: 90 degree, 3" x 6" self-scoring, bevel down
 - 6277-BU: 45 degree, 3" x 12" self-scoring, bevel up
 - 6284: 3" x 12" heavy-duty blade
 - 6285 : 3" x 6" heavy-duty blade
 - 6286 : 3" x 10" heavy-duty blade
 - 7050-10: 10" cutting head
 - 7050-12: 12" cutting head
 - 7050-6: 6" cutting head
- One-year manufacturer's warranty on parts and labor



5700®

RIDE-ON SCRAPER

5700-AKT, 5700-AUS, 5700-BOL, 5700-EUR, 5700-HER, 5700-JPN, 5700-KAN, 5700-KTU, 5700-UK, 5700-SUN, 5700DL-HER, 5700DL, 5700HS, 5700-LIN



5700HS: Designed to cover more space in less time; specifications made to order.
Special Note: the 5700 can be ordered with lifting arms, to make jobsite maneuvering easier.

5700 is available with or without the Dual Lift. The Dual Lift feature adds operator controls for adjusting blade pitch and angle while remaining seated.

SAFETY

- A.** Automatic kill switch is triggered when the operator seat is vacant
- B.** Larger/deepened forklift pockets
- C.** E-stop knob for safety
- D.** Debris deflector protects machine from loose material

COMFORT

- E.** Ergonomic design includes movable foot pegs, taller handles, and an adjustable seat
- F.** Hinged hood system for easy access maintenance

5700 Specifications

Power Supply	Battery	
Width*	24.5"	62 cm
Height	50"	127 cm
Length*	58"	147.32 cm
Weight	2,244 lb	1,017.9 kg
Removable Weight	185 lb front	83.9 kg front
Weight (machine only)	2,059 lb	933.9 kg
Speed	Up to 120 ft/min 160 ft/min for HS	up to 36.6 m/min 48.8 m/min for HS
Voltage	115	230
Frequency	60 Hz	50 Hz

5700DL Specifications

Power Supply	Battery	
Width*	24.5"	62 cm
Height	50"	127 cm
Length*	63"	160 cm
Weight	2,407 lb	1,091 kg
Removable Weight	185 lb front	84 kg front
Weight (machine only)	2,222 lb	1,007 kg
Speed	up to 120 ft/min	up to 36.6 m/min
Voltage	115	230
Frequency	60 Hz	50 Hz

**Measurements are without tooling attached.
Meets the requirements of the Machine Directive 2006/42/EC and EMC Directive 2004/108/EC. It is CE marked.*

PERFORMANCE

- G.** Precise hydraulic steering for maneuvering in tight spaces, zero turn radius
- H.** Quick-change swivel head blade holder
- I.** Optional dual-lift, hydraulic slide plate adjusts blade pitch and angle for continuous contact with the floor
- J.** Nonmarking tires
- K.** Twelve AGM 180-amp hour batteries provide 100 percent power, speed, and torque for 90 percent of the batteries' run cycle
- L.** Compact design fits through standard door frames and elevator doors
- M.** Front caster wheels allow increased maneuverability in tight spaces
- N.** LED light for increased visibility

INCLUDED WITH THE 5700

- 5110-100: Transport Wheels
- 402929: 3/4 x 1-1/8 Wrench
- 73507-1: 7 ft extension cord
- Operating and Service Manuals
- Kit 5175 includes:
 - 6277-BU: 45 degree, 3" x 12" self-scoring, bevel up
 - 6284: 3" x 12" heavy-duty blade
 - 6285: 3" x 6" heavy-duty blade
 - 6286: 3" x 12" heavy-duty blade
 - 7050-12: 12" cutting head
 - 7050-6: 6" cutting head
 - 7079-2: 2" x 6" angle shank w/ carbide tip
- One-year manufacturer's warranty on parts and labor



7700

RIDE-ON SCRAPER

7700-AUS, 7700-EUR, 7700-BOL, 7700-HER, 7700-SUN, 7700-UK



Powered by 12 200-amp hour batteries that exceed the industry standard, this machine is everything you need it to be. Bigger, heavier, and faster than the 5700, it is designed to remove difficult material and built to operate on almost any jobsite.

7700 Specifications

Power Supply	Battery	
Width*	29.5"	74.93 cm
Height	50"	127 cm
Length*	63"	160 cm
Weight	2,757 lb	1,250.6 kg
Removable Weight	185 lb front	83.9 kg front
Weight (machine only)	2,572 lb	1,167 kg
Speed	up to 200 ft/min	up to 61 m/min
Voltage	115	230
Frequency	60 Hz	50 Hz

Meets the requirements of the Machine Directive 2006/42/EC and EMC Directive 2004/108/EC. It is CE marked.

*Measurements are without tooling attached.

SAFETY

- A.** Automatic kill switch is triggered when the operator seat is vacant
- B.** E-stop knob for safety
- C.** Larger/deepened forklift pockets
- D.** Front debris deflector protects machine from loose material

COMFORT

- E.** Ergonomic design includes movable footpegs, taller handles, and an adjustable seat that allows for optimal operator comfort and the best possible line of sight.
- F.** Hinged hood system for easy-access maintenance

PERFORMANCE

- G.** Precise hydraulic steering for maneuvering in tight spaces, zero turn radius, and continuous torque for higher removal rates and greater productivity
- H.** Quick-change swivel head blade holder
- I.** Dual-lift, hydraulic slide plate adjusts blade pitch and angle for continuous contact with the floor; standard on the 7700
- J.** Nonmarking tires
- K.** AGM (Absorbed Glass Mat) batteries provide 100 percent power, speed, and torque for 90 percent of the batteries' run cycle
- L.** Compact design fits through standard door frames and elevator doors
- M.** Heavy-duty 3000 PSI wheel motors
- N.** Front caster wheels allow increased maneuverability in tight spaces
- O.** LED light for increased visibility on the jobsite

INCLUDED WITH THE 7700

- 5110-100: Transport Wheels
- 402929: 3/4 x 1-1/8 Wrench
- 73507-1: 7ft extension cord
- Operating and Service Manuals
- Kit 5175 includes:
 - 6277-BU: 45 degree, 3" x 12" self-scoring, bevel up

- 6284: 3" x 12" heavy-duty blade
- 6285: 3" x 6" heavy-duty blade
- 6286: 3" x 10" heavy-duty blade
- 7050-12: 12" cutting head
- 7050-6: 6" cutting head
- 7079-2: 2" x 6" angle shank w/ carbide tip

- One-year manufacturer's warranty on parts and labor



5625

RIDE-ON SCRAPER

5625-AUS, 5625DL, 5625-HER, 5625DL-HER, 5625-SUN, 5625-INT



5625 Specifications

Power Supply	Propane	
Width*	26"	66 cm
Height	51"	129.5 cm
Length	58"	147 cm
Weight**	1,822 lb	826.4 kg
Removable Weight	370 lb front, 75 lb rear	167.8 kg front, 34 kg rear
Weight (machine only)	1,377 lb	624.6 kg
Speed	up to 200 ft/min	up to 61 m/min
HP	25	18.6 kW

5625DL Specifications

Power Supply	Propane	
Width*	26"	66 cm
Height	52.25"	133 cm
Length*	63"	160 cm
Weight**	1,985 lb	900.4 kg
Removable weight	370 lb front, 75 lb rear	167.8 kg front, 34 kg rear
Weight (machine only)	1,540 lb	698.6 kg
Speed	up to 200 ft/min	up to 61 m/min
HP	25	18.6 kW

*Measurements are without tooling attached.

**Weight may vary depending on fill level and size of propane tank on machine.

The 5625 is available with or without the Dual Lift. The Dual Lift feature adds operator controls for adjusting blade pitch and angle while remaining seated.

SAFETY

- A.** Automatic kill switch is triggered when the operator seat is vacant
- B.** Liquid-cooled Kawasaki engine is engineered with National's exclusive catalytic design for the industry's lowest emissions
- C.** Front debris deflector protects machine from loose material

COMFORT

- D.** Ergonomic design includes movable foot pegs, taller handles, and an adjustable seat and armrests that allow for optimal operator comfort and the best possible line of sight
- E.** Hinged hood system for easy-access maintenance

PERFORMANCE

- F.** Precise hydraulic steering for maneuvering in tight spaces, zero turn radius, and continuous torque for higher removal rates and greater productivity
- G.** Quick-change swivel head blade holder
- H.** Optional dual-lift, hydraulic slide plate adjusts blade pitch and angle for continuous contact with the floor
- I.** Larger/deepened forklift pockets
- J.** Nonmarking tires
- K.** Compact design fits through standard door frames and elevator doors
- L.** Improved exhaust system meets federal OSHA regulations
- M.** Front caster wheels allow increased maneuverability in tight spaces
- N.** LED light for increased visibility on the jobsite

INCLUDED WITH THE 5625

- 5110-100: Transport Wheels
- 402929: 3/4 x 1-1/8 Wrench
- Operating and Service Manuals
- Kit 5175 includes:
 - 6277-BU: 45 degree, 3" x 12" self-scoring, bevel up
 - 6284: 3" x 12" heavy-duty blade
 - 6285: 3" x 6" heavy-duty blade
 - 6286: 3" x 10" heavy-duty blade
 - 7050-12: 12" cutting head
 - 7050-6: 6" cutting head
 - 7079-2: 2" x 6" angle shank w/ carbide tip
- 75008: Clip (2)
- One-year manufacturer's warranty on parts and labor
- 7050-P: Propane Tanks (2)
- 75007: CO detector (2)



8000

RIDE-ON SCRAPER

8000-HER, 8000-INT, 8000-NIS, 8000-SUN



This 2,842-pound scraper rivals other manufacturers' heavier machines. Different from scrapers that are powered using a hydrostat driver system, the 8000 offers the speed and power of propane while also combining patented carbide angle-shank technology with the added efficiency of dual-lift hydraulic slide plates. Consistent torque sets the operational standard for high removal rates, and each machine undergoes a rigorous quality assurance program including emissions certification.

8000 Specifications

Power Supply	Propane	
Width*	30"	76 cm
Height	65.5"	166 cm
Length	63"	160 cm
Weight**	2,989 lb	1,355.8 kg
Removable Weight	958 lb front, 75 lb rear	455 kg front, 34 kg rear
Weight (machine only)	1,856 lb	841.9 kg
Speed	up to 200 ft/min	up to 61 m/min
HP	25	18.6 kW

*Measurements are without tooling attached.

**Weight may vary depending on fill level and size of propane tank on machine.

*** Fire extinguisher not included.

SAFETY

- A.** Automatic kill switch is triggered when the operator seat is vacant
- B.** Larger/deepened forklift pockets
- C.** Liquid-cooled Kawasaki engine is re-engineered with National's exclusive catalytic design for the industry's lowest emissions
- D.** Front debris deflector protects machine from loose material

COMFORT

- E.** Ergonomic design includes movable foot pegs, taller handles, and an adjustable seat that allows for optimal operator comfort and the best possible line of sight
- F.** Hinged hood system for easy-access maintenance

PERFORMANCE

- G.** Precise hydraulic steering for maneuvering in tight spaces, zero turn radius, and continuous torque for higher removal rates and greater productivity
- H.** Quick-change swivel head blade holder
- I.** Dual-lift, hydraulic slide plate adjusts blade pitch and angle for continuous contact with the floor; standard on every 8000; this also adds on additional 150+ pounds of down pressure on the cutting head
- J.** 21-inch nonmarking tires
- K.** Compact design fits through standard door frames and elevator doors
- L.** Hydraulic brake system automatically engages when the machine is in the off position
- M.** Front caster wheels allow increased maneuverability in tight spaces
- N.** Improved exhaust system meets federal OSHA regulations
- O.** LED light for increased visibility on the jobsite

INCLUDED WITH THE 8000

- 5110-100: Transport Wheels
- 402929: 3/4 x 1-1/8 Wrench
- Operating and Service Manuals
- Kit 5175 includes:
 - 6277-BU: 45 degree, 3" x 12" self-scoring, bevel up
 - 6284: 3" x 12" heavy-duty blade
 - 6285: 3" x 6" heavy-duty blade
 - 6286: 3" x 12" heavy-duty blade
 - 7050-12: 12" cutting head
 - 7050-6: 6" cutting head
 - 7079-2: 2" x 6" angle shank w/ carbide tip
 - 74854: Weight, 37 pounds (10) (front)
 - 400197: Weight, 28 pounds (9) (front)
 - 402102: Weight, 84 pounds (4) (front)
 - 5110-404: Weight, 75 pounds (1) (rear)
 - 402139: Propane tanks (2)
 - 75008: Clip (2)
 - 5700-88: Hour meter
 - Instruction manual
 - One-year manufacturer's warranty on parts and labor
 - 75007: CO detector (2)



RIDE-ON MACHINE ACCESSORIES

SWIVEL CUTTING HEAD ASSEMBLIES



Tough swivel heads rotate to ensure continuous blade contact with the floor. Flip it over to use the second sharp edge without having to remove it from the machine. Available in a full range of sizes, to fit any job.

Fits the following products: **4230, 5110, 5200QL, 5625, 5000, 5700®, 2900, 7700, and 8000**

- 7050-8RBH: 8-inch razor blade head
- 7050-12RBH: 12-inch razor blade head
- 7050-14RBH: 14-inch razor blade head
- 7050-6: 6-inch cutting head
- 7050-8: 8-inch cutting head
- 7050-10: 10-inch cutting head
- 7050-12: 12-inch cutting head
- 7050-14: 14-inch cutting head
- 7050-27: 27-inch cutting head
- 402239: 3/8 x 1-1/2 replacement retaining pin secures cutting head assemblies
- 73422: Cutting Head Bolt

4003228 HYDRAULIC SLIDE PLATE KIT



machines

Adjust the height of the slide plate using the hydraulic hand control for precise angling. Comes standard on **7700** and **8000** ride-on scrapers

- No lifting, dismounting, or manual labor required to adjust plate height
- Adds 163 pounds of weight to the front of the machine, where it is most effective
- Available as an option on new ride-on machines or as a kit for existing ride-on

7050-15 CUTTING HEAD EXTENSION

- Reaches under tight areas
- 17-inch length
- Cutting head sold separately



7074 TILE BOX

- For fast cleanup, debris collection, and removal, this box is made of high-abrasion alloy for long-lasting durability
- For use with 7050-27
- Size: 5 inches deep, 27 inches wide, 6 inches tall
- Cutting head sold separately



5110-100 TRANSPORT WHEELS

Quick and easy to attach, this assembly creates stability and safe transportation over any surface. Fits all National-brand ride-on machines.

70639 WHEEL COVERS



- Protective cover slips easily on and off wheels
- Sold individually
- Fits all National-brand ride-on machines

5700-88 HOUR METER



- Monitors the hours of usage
- Fits all National-brand ride-on machines.

400321 ARMREST



Fits all current National-brand ride-on machines

75007 LAPEL CARBON MONOXIDE MONITOR



Ships with the **5625** and **8000** machines. For jobsites where carbon monoxide could be present, this badge can detect as little as 100 ppm carbon monoxide gas at approximate relative humidity range of 33 to 50 percent. If the humidity is very high, it can detect concentrations as low as 20 ppm. The presence of CO changes the sensor from red to gray/black as the concentration level increases. Once the detector is exposed to fresh air, it will return back to red. Once opened, the badge lasts approximately 90 days. Adhesion strip on the back, or optional lapel clip mounts almost anywhere.

75008 LAPEL CARBON MONOXIDE CLIP



5204 BATTERY POWER PACK

Designed for high vibration and shock load, this battery pack makes the 5200QL a true "cordless" machine. The removable batteries can be changed so there is no need for downtime while recharging.

- Unique design eliminates acid spilling
- Designed for high vibration

This battery pack runs to a deeper discharge than typical 75-amp hour battery packs and has the ability to take a rapid charge without affecting the cycle life.



BATTERY CHARGER

Exclusively designed to work with the **5200QL**. This high-performance battery charger is for use in demanding applications where optimal performance and service life are critical. It provides a complete charge in a short amount of time and works specifically with the 5204 power pack. Its 48-volt charger runs on 115-volt power

- 5212: 48 V, 60 Hz, 115 V
- 404062: 48 V, 50 to 60 Hz, 100 V (for Japan Only)



WOOD-SCORING SCARIFIER DRUM

This wood scoring drum attaches to National's scarifiers. It is an 8" drum, with three or five scoring blades. Using this on your scarifier eliminates the need to get down on your hands and knees to use a circular saw to score the wood.

- 402192: Drum with Three Blades
- 402191: Drum with Five Blades

73507-1

- 7-foot, 12-gauge extension cord for charging

WALK-BEHIND MACHINE ACCESSORIES



6280-505 SWIVEL HEAD ATTACHMENT

Optional swivel head attachment maintains 100 percent contact between the blade and the surface, maximizing production rates. Rotate the head 180 degrees to self-sharpen the blade during use.

- Holds blades of .062 or .094 thickness
- Works on thin, soft coatings, paint, hard-to-remove gummy or dry adhesives
- Ultimate adhesive removal
- Designed to fit on the **550**, **5280** and **6280-COM** walk-behind machines

6280-500 SWIVEL HEAD ATTACHMENT FOR RAZOR BLADES

Optional attachment keeps your blade in contact with the surface of the floor.

- Designed to fit on the **550**, **5280**, and **6280-COM** walk-behind machines

6251 LOADING RAMP

- 15" x 6'9"

402311 REPLACEMENT WHEEL PIN

- 5/16 x 2-1/16 replacement wheel pin for the **6280** and **6280HD**

CUTTING HEADS FOR THE 6280HD GLADIATOR

- 7280-6: 6-inch cutting head
- 7280-10: 10-inch cutting head
- 7280-12: 12-inch cutting head
- 7280-14: 14-inch cutting head
- 7280-12RBH: Razor blade head

7280-2C ANGLE ATTACHMENT

- 30-degree angle attachment for hard goods removal with the **6280HD**

402276

- 9 degree angle attachment

7280-4 RETAINER CAP ASSEMBLY

- Replacement assembly for **6280HD** shanks



Straight Shanks

Designed to remove ceramic, wood, and thick epoxy.



Part #	Dimensions (W x L x Thickness)	550	5280	6280	6280HD	Ride-On
7070-2	4" x 2" x .500"					X
7070-3	4" x 3" x .500"					X
7070-4	4" x 4" x .500"					X
7070-6	4" x 6" x .500"					X

Angle Shanks

Designed to remove ceramic, wood, and thick epoxy.



Part #	Dimensions (W x L x Thickness)	550	5280	6280	6280HD	Ride-On
7071-2	4" x 2" x .500"					X
7071-3	4" x 3" x .500"					X
7071-4	4" x 4" x .500"					X
552	4" x 2" x .312"	X				

Straight Shanks with Carbide Tip

These shanks work with a similar application variety as the 7070 shanks. Perfect for elastomeric coatings



Part #	Dimensions (W x L x Thickness)	550	5280	6280	6280HD	Ride-On
7072-2	4" x 2" x .500"					X
7072-3	4" x 3" x .500"					X
7072-4	4" x 4" x .500"					X
7072-6	4" x 6" x .500"					X

Angle Shank with Carbide Tip

These shanks are designed for ceramic removal and thin-set re-scraping. The 552 angle shank with carbide tip is designed for light-duty commercial- and residential-grade ceramic tile and hard good removal.



Part #	Dimensions (W x L x Thickness)	550	5280	6280	6280HD	Ride-On
7281-12	4" x 2" x .312"				X	
7281-1	6" x 1" x .500"				X	
7281-2	6" x 2" x .500"				X	
7079-2	6" x 2" x .500"					X
7079-4	6" x 4" x .500"					X
7079-6	6" x 6" x .500"					X

A 551 shank holder is required to attach the 552 shank to the 550 walk-behind scraper.

Wood Floor Shanks

For hardwood floor removal; fits the 6280HD Gladiator only.



Part #	
7082-8	2.5" x 8"

Ultra HD Angle Shank with Removable Carbide Tip

Designed for removing hard goods with your ride-on scraper, this shank features removable and sharpenable carbide tips. For maximum efficiency, the operator can exchange tips and sharpen them later



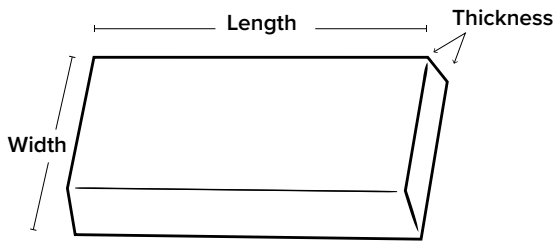
Part #	Includes
403112	2" Ultra HD shanks, 3 carbide tips, set screws and tool
402394	3 carbide tips, set screws, and tool
402601	Sharpening holder; designed for efficiency, this will allow you to safely hold the carbide tip while it is sharpened

Tapered Wood Floor Shank

The longer taper works great on tough wood floors (glued and nailed). The long length allows the blade to easily slide under tough materials.



Part #	Dimensions (W x L x Thickness)	550	5280	6280	6280HD	Ride-On
7075-8	8" x 2" x .300"					X
7075-11	11" x 2" x .300"					X
7077-8	8" x 3.5" x .300"					X
7077-11	11" x 3.5" x .300"					X



Guillotine Blades



Part #	Dimensions (W x L x Thickness)	550	5280	6280	6280HD	Ride-On
6285-GT	3.75" x 6" x .094"	X	X	X	X	X
6284-GT	3.75" x 12" x .094"	X	X	X	X	X
6290-GT	3.75" x 6" x .187"					X
6292-GT	3.75" x 12" x .187"					X

1086 Blades

These Japanese-style blades are the ideal choice for challenging jobs.



Part #	Dimensions (W x L x Thickness)	550	5280	6280	6280HD	Ride-On
401982	3" x 14" x .094"	X	X	X	X	X
401983	3" x 27" x .094"					X
401978	4" x 24" x .094"					X
401980	4" x 27" x .094"					X

Standard Blades



These heavy-duty blades are designed to remove soft goods, carpet, and vinyl flooring. Their .062" thickness offers flexibility to maximize the shear-point angle.

Part #	Dimensions (W x L x Thickness)	550	5280	6280	6280HD	Ride-On
147	4" x 6" x .062"	X	X	X	X	X
148	5" x 6" x .062"	X	X	X	X	X
135	5" x 16" x .062"	X	X	X	X	X
136	5" x 8" x .062"		X	X	X	X

Blades with Slots

These slotted heavy-duty blades are designed to remove soft goods, carpet, and vinyl flooring.



Part #	Dimensions (W x L x Thickness)	550	5280	6280	6280HD	Ride-On
130-S	3" x 10" x .062"	X	X	X	X	
131-S	3" x 16" x .062"	X	X	X	X	

Heavy-Duty Blades

These heavy-duty blades work on VCT, VAT, wood, tile, rubber, epoxy, elastomeric coatings, scraping thin-set, and glued ceramic.



Part #	Dimensions (W x L x Thickness)	550	5280	6280	6280HD	Ride-On
6281	3" x 8" x .094"	X	X	X	X	X
6282	3" x 14" x .094"	X	X	X	X	X
6283	3" x 27" x .094"					X
6284	3" x 12" x .094"	X	X	X	X	X
6285	3" x 6" x .094"	X	X	X	X	X
6286	3" x 10" x .094"	X	X	X	X	X
6240	4" x 6" x .094"	X	X	X	X	X
6241	4" x 8" x .094"	X	X	X	X	X
6242	4" x 12" x .094"	X	X	X	X	X
6243	4" x 15" x .094"	X	X	X	X	X
6244	4" x 24" x .094"					X
6245	4" x 10" x .094"	X	X	X	X	X
6246	4" x 27" x .094"					X

Extra Heavy-Duty Blades

They work on VCT, VAT, wood, tile, lighter ceramic, re-scraping thin-set, all carpets, cork, elastomeric coatings, and re-scraping rubber and urethane coatings.



Part #	Dimensions (W x L x Thickness)	550	5280	6280	6280HD	Ride-On
6270	1.5" x 3" x .250"					X
6271	3" x 6" x .250"					X
6273	3" x 11" x .250"					X
6290	3" x 6" x .187"	X	X	X	X	X
6291	3" x 8" x .187"	X	X	X	X	X
6292	3" x 12" x .187"	X	X	X	X	X
6293	3" x 14" x .187"					X
6294	3" x 27" x .187"					X

1-Inch Blades

Designed for VCT and adhesive re-scrape. They also work well for parking deck coatings, epoxy, and elastomeric coatings.



Part #	Dimensions (W x L x Thickness)	550	5280	6280	6280HD	Ride-On
7091	1" x 4" x .094"				X	X
7092	1" x 8" x .094"				X	X
7093	1" x 10" x .094"				X	X
7094	1" x 12" x .094"				X	X

This blade requires a razor blade cutting head.

Razor/Scraper Blades

Designed for superhard thin epoxies, thin mil coatings (like urethane paint), poured elastomeric coatings up to 60 mil, and hard to remove adhesives.



Part #	Dimensions (W x L x Thickness)	550	5280	6280	6280HD	Ride-On
363-2	.750" x 8" x .032"	X	X	X	X	X
368-8	.937" x 8" x .045"	X	X	X	X	X
368-12	.937" x 12" x .045"	X	X	X	X	X
368-15	.937" x 15" x .045"	X	X	X	X	X

Sold in packs of 50. This blade requires a razor blade cutting head

Increased Angle Blades

These blades are mainly used for VCT, but they can be used on most other applications.



Part #	Dimensions (W x L x Thickness)	550	5280	6280	6280HD	Ride-On
7081	3" x 10" x .062"	X	X	X	X	
7083	3" x 8" .062"	X	X	X	X	

Premium High-Tempered Blades

They work on all glued-down carpets, VCT, VAT, rubber tile, cork, and rescraping adhesive and elastomeric coatings.



Part #	Dimensions (W x L x Thickness)	550	5280	6280	6280HD	Ride-On
7050-200	3" x 6" x .062"	X	X	X	X	X
7050-201	3" x 8" x .062"	X	X	X	X	X
7050-202	3" x 10" x .062"	X	X	X	X	X
7050-203	3" x 12" x .062"	X	X	X	X	X
7050-204	3" x 14" x .062"	X	X	X	X	X
7050-205	3" x 27" x .062"					X

Double-Edge Blades



Part #	Dimensions (W x L x Thickness)	550	5280	6280	6280HD	Ride-On
130-D	3" x 10" x .062"	X	X	X	X	
147-D	4" x 6" x .062"	X	X	X	X	
148-D	5" x 6" x .062"	X	X	X	X	

Self-Scoring Blades

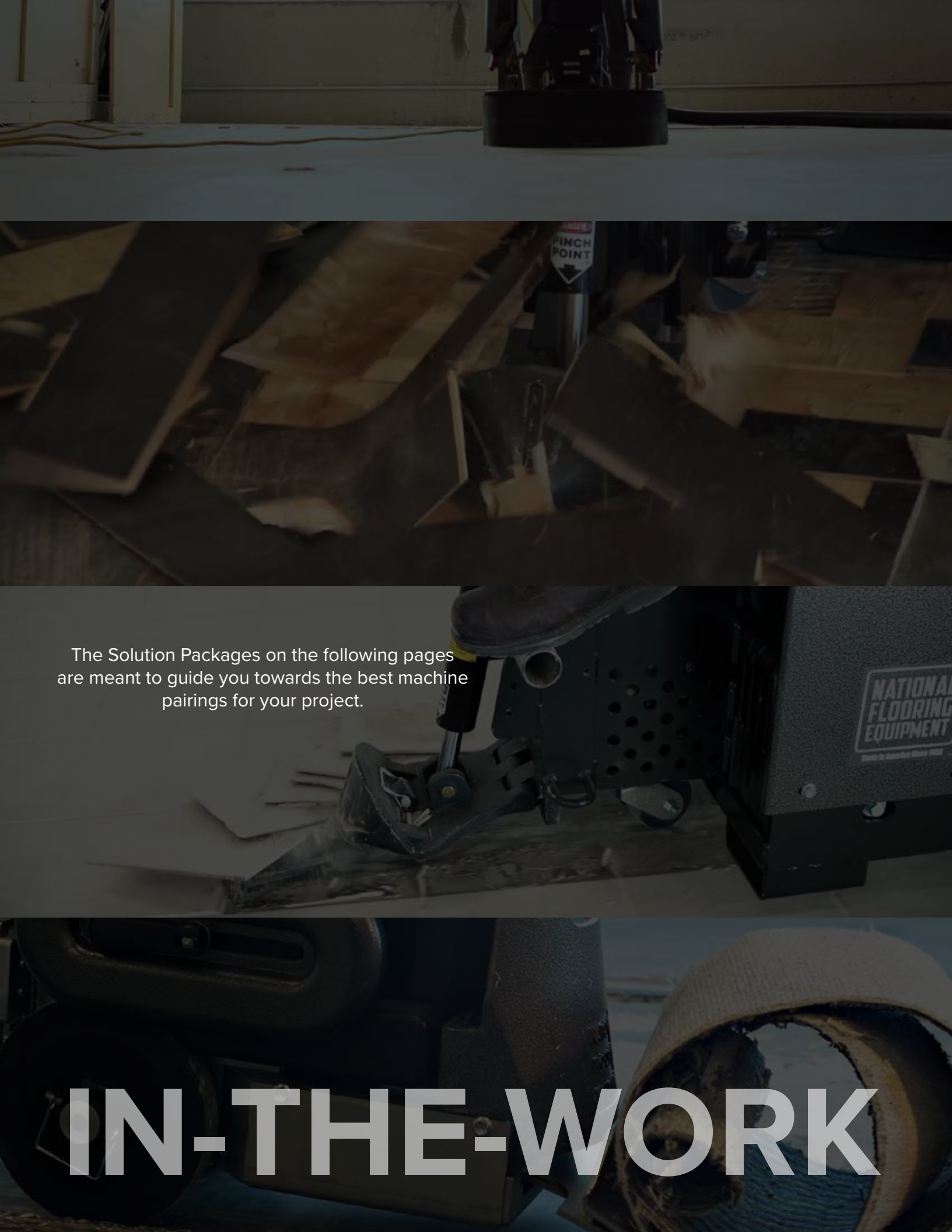
These angled self-scoring blades work on attached cushion, unitary or secondary backing, vinyl back, soft to medium PVC, linoleum, carpet tiles, soft cork, enhancer, and unbond hot melts.



Part #	Description (W x L x Thickness)	550	5280	6280	6280HD	Ride-On
6255-BU : Blade, Self-scoring 90 degree, 4" x 6" x .062", BU		X	X	X	X	
6257-BU : Blade, Self-scoring 90 degree, 3" x 9" x .062", BU		X	X		X	X
6258-BU : Blade, Self-scoring 90 degree, 3" x 12" x .062", BU		X	X	X	X	X
6259-BU : Blade, Self-scoring 90 degree, 3" x 14" x .062", BD			X	X	X	X
6260-BD : Blade, Self-scoring 90 degree, 3" x 6" x .094", BD					X	X
6265-BD : Blade, Self-scoring 90 degree, 3" x 8" x .094", BD		X	X		X	X
6266-BD : Blade, Self-scoring 90 degree, 3" x 10" x .094", BD		X	X		X	X
6276-BU : Blade, Self-scoring 45 degree, 3" x 10" x .094", BU		X			X	X
6277-BU : Blade, Self-scoring 45 degree, 3" x 12" x .094", BU		X	X	X	X	X
6278-BU : Blade, Self-scoring 45 degree, 3" x 14" x .094", BU			X	X	X	X
6279-BU : Blade, Self-scoring 45 degree, 3" x 27" x .094", BU						X
6247-BU : Blade, Self-scoring 90 degree 4" x 10" x .094", BU		X	X		X	X
6249-BU : Blade, Self-scoring 90 degree, 4" x 12" x .094", BU		X	X	X	X	X
6248-BU : Blade, Self-scoring, 90 degree, 4" x 24" x .094", BU						X
6256-BU:* Blade, Self-scoring, 90 degree, 4" x 6" x .062" x 4"h, BU			X		X	X
6261-BU:* Blade, Self-scoring 90 degree, 3" x 12" x .062" x 4"h, BU		X				X
6262-BU:** Blade, Self-scoring 90 degree, 4" x 6" x .094 x 4"h, BU			X		X	X
6264-BU:** Blade, Self-scoring 90 degree, 3" x 12" x .094" x 4"h, BU		X	X	X	X	X

* Designed for double-stick carpet and soft goods removal applications

** NEW, thicker self-scoring blades



The Solution Packages on the following pages
are meant to guide you towards the best machine
pairings for your project.

IN-THE-WORK

WOOD FLOORING REMOVAL SOLUTION PACKAGE

Your first step on a jobsite is to plug in the Ion4K. This will keep ambient dust to a minimum, creating a safe and clean worksite for all. The next step is to score the existing wood floor. Our 110V Scarifier with the Wood Scoring Drum makes quick work of this task. Follow this with the 7700 Ride-on scraper and our Tapered Wood Floor Shank for unbeatable results.



7700
Ride-On Scraper
Specs on Page 20



**Tapered Wood Floor
Shank**
Options on Page 26



DL2000
Dust Collector
Specs on Page 64



110-8
110 V Scarifier
Specs on Page 59



402192
Wood Scoring Drum
Specs on Page 61



Ion4K™
Ionizer
Specs on Page 63

Need assistance
picking the right shank?



SCAN ME

CERAMIC TILE REMOVAL SOLUTION PACKAGE

Removing ceramic tile requires a tough machine with the proper torque and tooling to stay in the work. The 6280HD Gladiator, with its siped wheels and powerful drive system, is perfectly suited to this task. Combined with our Angle Shank with Carbide Tip, you will make quick work of tile removal. Use our 2-speed Helix passive planetary grinder to remove any leftover residue and profile the concrete.



6280HD Gladiator
Walk-Behind Scraper
Specs on Page 13



7281-1
Angle Shank with Carbide Tip
Specs on Page 26



Ion1K
Ionizer
Specs on Page 63



Helix
Passive Planetary Grinder
Specs on Page 35



9556 & 9521
PCD Tooling
Specs on Page 37



DL2000
Dust Collector
Specs on Page 64

Need help removing
ceramic tile?



SCAN ME

COMMERCIAL CARPET REMOVAL SOLUTION PACKAGE

National's 5700DL and 6280 Commander are ideally suited for carpet removal. Paired with our self-scoring blades, these machines make quick & efficient work out of cushioned, double-stick and regular carpet types. The A95, A95 accessory kit and DL2000 are a great solution for cleaning and profiling the floor after the carpet is removed.



5700DL
Ride-On Floor Scraper
Specs on Page 19



6280 Commander
Walk-Behind Scraper
Specs on Page 12



Self-Scoring Blades
Options on Page 28



A95
8-inch Manual Shot Blaster
Specs on Page 50



A95 Kit
Shot Blaster Kit
Contents on Page 57



DL2000
Dust Collector
Specs on Page 64

See why our self-scoring
blades are the best choice
for carpet removal



SCAN ME

CONCRETE PREP AND POLISH SOLUTION PACKAGE

Preparing and polishing any size of concrete floor is a simple task with our Helix and GP700 Grinders. The Helix brings 2-speed functionality, edge grinding, and versatility to your work, while the GP700 workhorse powers through each polishing step with ease.



Helix
Passive Planetary Grinder
Specs on Page 35



Brazen Diamonds
Selection on Page 37



DL2000
Dust Collector
Specs on Page 64



GP700
Counter Rotational Grinder
Specs on Page 39



Polishing Package
Variations on Page 42
*Medium Concrete Hardness
Package Shown

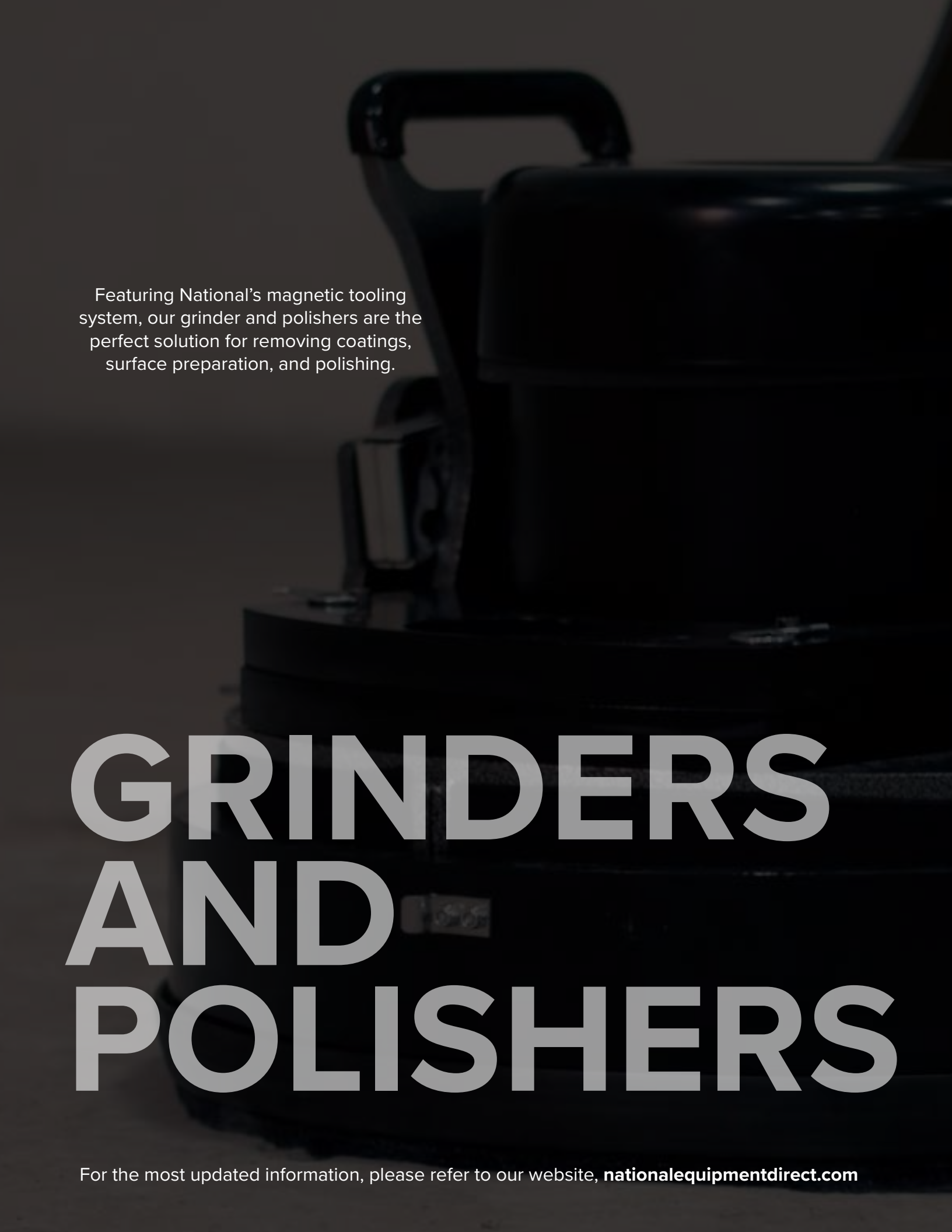


DL4000P
Dust Collector
Specs on Page 68

Learn what sets
the Helix apart



SCAN ME



Featuring National's magnetic tooling system, our grinder and polishers are the perfect solution for removing coatings, surface preparation, and polishing.

GRINDERS AND POLISHERS

For the most updated information, please refer to our website, nationalequipmentdirect.com

PASSIVE PLANETARY GRINDER

HELIX-EUR, HELIX-UK, HELIX-AUS, HELIX-BOL, HELIX-HER, HELIX-HGK, HELIX-JPN, HELIX-KTU, HELIX-SUN



Designed for small jobs and tough-to-reach spaces, this 16-inch planetary grinder creates the perfect profile for new coatings. This easy-to-operate machine has a built-in edge grinder, dual-speed operation, an adjustable handle, and a floating dust skirt for maximum efficiency.

HELIX® Specifications

Width	17.5"	44.5 cm
Disk Size	16"	41 cm
Max. Height	47.6"	120.9 cm
Min. Height	29.4"	74.4 cm
Max. Length	47"	119.4 cm
Min. Length	27.9"	70.9 cm
Weight	206 lb	93 kg
Grinding Pressure	128 lb	58 kg
Drum RPM	High/Low Speed: 304/171 (120V/60 Hz) High/Low Speed: 291/164 (230V/50Hz)	
Motor RPM	High/Low Speed: 3339/1871 (120V/60 Hz) High/Low Speed: 3200/1800 (230V/50 Hz)	
Motor Phase	Single	
HP	1.5	
Amps	120V/60 Hz 12 amps	230V/50 Hz 6.3 amps

SAFETY

- A.** Quick-release levers allow the machine to be separated into two pieces for easy transport
- B.** LED light illuminates the surface directly behind the machine

COMFORT

- C.** Fully adjustable handle accommodates a range of operating positions

PERFORMANCE

- D.** Capable of edge grinding on the left or right side of the machine by rotating the side of the dust skirt up, allowing the operator to grind within a half inch of the wall
- E.** Removable weights give the operator the freedom to increase or decrease head pressure when grinding
- F.** 16-inch grinding plate incorporates a floating tooling assembly that allows the cutting head to follow the contours of the floor; the tooling assembly rotates 180 degrees for easy tooling changes
- G.** Dual-speed motor increases the versatility of this machine; operating at high or low speed

INCLUDED WITH THE HELIX®

- 404021: Magnetic tooling holder (3)
- 9245 Velcro adapter (3 each)
- 403231 Floating dust skirt
- 402757: Helix Grind & Scraper Plate
- One-year manufacturer's warranty on parts and labor
- Operating and Service Manual

RECOMMENDED ACCESSORIES

We recommend pairing your Helix planetary grinder with the DL2000 dust collector and DLS2000 pre-separator.

We also recommend the Helix Scarifier Tooling for extra tough removals.



8274-4

PLANETARY GRINDER AND POLISHER



Magnetic tooling easily snaps into place

The 8274-4 is the only grinder on the market offering 3 HP at 115 volts while operating at a 230-volt level. With variable speed and a soft start to control its amperage draw, the 8274-4 adjusts to the needs of small or large jobs. This machine is well suited for removal of thin-set, coatings, adhesive, prepping concrete for overlays or coatings, and polishing.

8274-4 Specifications

Width	20"	51 cm
Disk Size	18.5"	47 cm
Max. Height	52"	132 cm
Min. Height	27.5"	70 cm
Max. Length	75"	191 cm
Min. Length	38.5"	98 cm
Weight	388 lb	176 kg
Drum RPM	133.8	
Motor RPM	400-2000	
Motor Phase	Single*	
HP	3	2.24 kW
Amps	15 or 20 - controller can switch between both settings	
Voltage	115	
Frequency	60 Hz	

*Conversion from single-phase to three-phase power

SAFETY

- A. Dual rear vacuum ports
- B. Removable handle and weights for easy transport

COMFORT

- C. Three-part adjustable angle handle

PERFORMANCE

- D. Choose from 15A or 20A circuit-breaker settings with a convenient switch on the side of the controller; the 15A selection limits motor draw to 15 amps; the 20A selection pulls up to 20 amps

- E. Forward and reverse directional controls increase tooling productivity with cleaner consumables and more even wear.

- F. Variable speed control

- G. Flip-style weights for added or decreased head pressure

- H. 18-inch grinding path; uses National's patented self-tensioning, single-belt design to prepare concrete surfaces to a 3000-resin shine

- I. Adjustable velcro dust guard lets the machine operate within an eighth of an inch of walls and promotes nearly dustless operation

- J. Grinder head rotates 90 degrees for easy tooling change access; Morflex couplers, polishing undulating concrete surfaces or creating a uniform scratch pattern for coating applications; operates a complete dry grind and polish system to eliminate messy and hazardous slurry

INCLUDED WITH THE 8274-4

- 401882: Morflex couplers
- 9241 Quick-change magnetic-mount assembly: Three assemblies and three 73250 tooling holder mounting screws are required
- 73135: 5/32" Hex key
- 9245 Velcro Adapter: Mounts onto the 9241 quick-change magnetic assembly for using polishing pads and brazed disks. Three adapters are required.
- 6280-401B: 7/32 t-handle wrench
- Instruction manual

RECOMMENDED ACCESSORIES

We recommend pairing your 8274-4 planetary grinder with the DL2000 dust collector and DLS2000 pre-separator.

PLANETARY GRINDER TOOLING AND ACCESSORIES

PCDS AND CARBIDES

Part #	Description	Best Uses
9555	2-UP PCD- MICRO	Remove heavy stock, adhesive, thin set, and epoxies
9557	4-UP PCD- MICRO	
9554	1-UP PCD- 1/2 ROUND	
9556	2-UP PCD- 1/2 ROUND	
7268-2	CARBIDES	Remove coatings, glue, thin set, and thin mastics
9521	CARBIDE & TOOLING HOLDER	Use to attach the above tooling to National Grinders
9550	SCREW	Use to attach tooling to the above holder
9500	BLANKS	



METAL BOND DIAMONDS

Perfect for leveling concrete high spots and repairing imperfections as well as creating the perfect profile for accepting new coatings and epoxies, or preparing concrete for polishing.

Part #	Description	Best Uses
FULL BAR DIAMOND INSERTS		
9508-16	16 GRIT	Remove epoxy as well as heavy and light sealers
9508-16SB	16 GRIT	Remove various coatings, and profiles on HARD concrete only
9508-30	30 GRIT	Remove light sealers
9508-30SB	30 GRIT	Remove various coatings, and profiles on HARD concrete only
HALF BAR DIAMOND INSERTS		
9507-6	3 GRIT	Remove thin epoxy, paint, adhesives, and sealers
9507-12	12 GRIT	Remove thin epoxy, paint, adhesives, and sealers
9507-16	16 GRIT	Remove thin epoxy, paint, adhesives, and sealers
9507-16HB	16 GRIT	Remove various coatings, and profiles on SOFT concrete only
9507-30	30 GRIT	Removes sealers and preps concrete for polishing
9507-30HB	30 GRIT	Remove various coatings, and profiles on SOFT concrete only
PROFILING DIAMOND INSERTS		
9510-30	30 GRIT	Prep high-/moderate-density concrete for reapplication
9510-50	50 GRIT	Prep concrete for polishing
9510-120	120 GRIT	Prep concrete for polishing
SUPER SOFT, SINGLE BAR DIAMOND INSERTS		
9504-25	25 GRIT	Extremely aggressive coating removal with supersoft matrix for hard concrete or heavy cure and seal treatments, perfect for breaking surface tension



BRAZED TRAPEZOID DIAMONDS

Used primarily in light industrial and residential applications for concrete grinding and profiling as well as sealer and top coat removal. Provide excellent surface profiles for new coatings, epoxies, or stains. Also create exceptional profiles prior to polishing concrete.

Part #	Description	Best Uses
9522-16	16 GRIT	Remove paint, stain, and sealers; prep concrete for reapplication
9522-30	30 GRIT	Prep concrete for reapplication and polishing
9522-50	50 GRIT	Prep concrete for reapplication and polishing
9522-100	100 GRIT	Prep concrete for polishing



5-INCH BRAZED DIAMONDS

Part #	Description	Best Uses
9235-16	16 GRIT	Remove thin epoxy, paint, stain, adhesives, and heavy sealers
9235-30	30 GRIT	Remove adhesives, heavy and light sealers
9235-50	50 GRIT	Create a "broom finish" on soft concrete surfaces; first stage to polishing concrete
9235-100	100 GRIT	Create a "broom finish" on soft concrete surfaces; first stage to polishing concrete



5-INCH POLISHING PADS

Used for polishing concrete to various finishes and shines. Resin bond. Available in escalating grits. These polishing pads are for use with all National planetary grinders

Part #	Description	Best Uses
9267-50	50 GRIT	Achieve a "no reflection" polished concrete
9267-100	100 GRIT	Follow 9267-50 to create a "little reflection" polished concrete
9267-200	200 GRIT	Follow 9267-100 to create a "moderate reflection" polished concrete
9267-400	400 GRIT	Follow 9267-200 to create a "satin reflection" polished concrete
9267-800	800 GRIT	Follow 9267-400 to create a "shine" polished concrete
9267-1500	1500 GRIT	Follow 9267-800 to create a "high shine" polished concrete
9267-3000	3000 GRIT	Follow 9267-1500 to create a "mirror" polished concrete



9267-50



9267-100



9267-200



9267-400



9267-800



9267-1500



9267-3000

ACCESSORIES

402757 HELIX® GRIND AND SCRAPE PLATE

The deluxe Helix Grind and Scraper Plate is the most versatile prepping plate in the industry. This magnetic tooling system converts from aggressive grinding and scraping to passive planetary for diamond grinding, carbide/PCD scraping, polishing, and sanding. The Morflex couplers allow the plate to follow the contour of the floor

- Fits the Helix
- Rigid plate mount allows for aggressive grinding and scraping
- Passive planetary tooling creates random scratch pattern
- Polishes and sands without leaving swirl marks
- Morflex couplers reduce the shock to the operator and the machine
- Follows the contour of the floor for uniform operation in low spots
- For use with machines large enough to accept a 16-inch plate with a standard 3 1/4-inch hub
- Converts from grinding to scraping to polishing to sanding in seconds
- Includes three satellite plates that are easily attachable/detachable with cotter pins
- Has a sliding latch that makes the mounting/dismounting of the plate quick and easy



73250 TOOLING HOLDER MOUNTING SCREW

73214 FLOATING ISOLATOR ASSEMBLY MOUNTING SCREW

401882 MORFLEX COUPLER

73081 HELIX® SAFETY SCREW

73097 8274-4 SAFETY SCREW

403978: HELIX CLUTCH PLATE

GP700

CONCRETE GRINDER AND POLISHER

GP700-EUR



The new and improved GP700 grinder and polisher is ideal for prepping concrete floors for topical coatings, overlayers, and adhesive while also providing the variety of tooling and power needed to deliver a beautifully polished floor.

GP700 Specifications		
Width	27.25"	68.6 cm
Height	37.5"	95 cm
Length	56.5"	143 cm
Cleaning Path	27"	68.6 cm
Weight	800 lb	363 kg
Grinding Pressure with Weights	440 lb	200 kg
Tooling RPM	390-585 RPM	
Motor Phase	Single, Three	
Frequency	60 Hz	
HP	7.5	5.6 kW
Voltage	230	
Amps	30	

SAFETY

- A.** Handle transport wheels incorporated for easy loading and unloading
- B.** Four removable side weights for additional head pressure

COMFORT

- C.** Adjustable/foldable handle allows for compact transport and operator comfort when in use

PERFORMANCE

- D.** Adjustable shroud incorporates a brush for a 360-degree air intake
- E.** Rear spring suspension allows for a more even prep over uneven surfaces
- F.** Forward/rear locking pitch-adjustable axle that allows the operator to change the angle of the head pressure from the front to the back to compensate for incline/declines on uneven surfaces
- G.** Soft, regular, or hard couplers available for varying floor conditions
- H.** New stainless steel, 7-gallon water tank
- I.** Control box includes variable-speed soft start, forward and reverse functionality

GP700 ESTIMATED PRODUCTION RATES

- Mastic Removal: 350 square feet per hour / 106 sq m/hr
- Thin-set Removal: 400 square feet per hour / 122 sq m/hr
- Mil-coatings Removal: 200 square feet per hour / 61 sq m/hr
- Concrete Polishing: 450 square feet per hour / 137 sq m/hr

INCLUDED WITH THE GP700

- 30 feet of power cord

RECOMMENDED ACCESSORIES

We recommend pairing your GP700 grinder with the DL3000 or DL4000 dust collector and DLS3000 preseparator.

GP3000

CONCRETE GRINDER AND POLISHER

The GP3000 grinder and polisher is ideal for prepping concrete floors for topical coatings, overlayments, and adhesive while also providing the variety of tooling and power needed to deliver a beautifully polished floor. The 28-inch cleaning path and increased grinding head pressure makes this an ideal machine for commercial and industrial projects.



GP3000 Specifications

Width	29.5"	75 cm
Height	52"	132 cm
Length	72.25"	183 cm
Cleaning Path	28"	71 cm
Weight	1,425 lb	646 kg
Grinding Pressure with Weights	1,090 lb	494 kg
Tooling RPM	385-600	
Motor Phase	Three	
Frequency	60 Hz	
HP	25	18.6 kW
Voltage	230	
Amps	60	

SAFETY

- A.** Handle transport wheels incorporated for easy loading and unloading
- B.** Four removable side weights for additional head pressure; positioning weights into handle pockets reduces head pressure for easy mobility

COMFORT

- C.** Adjustable/foldable handle allows for compact transport and operator comfort when in use

PERFORMANCE

- D.** Adjustable shroud incorporates a brush for a 360-degree air intake
- E.** Rear spring suspension allows for a more even prep over uneven surfaces
- F.** Soft, regular, or hard couplers available for varying floor conditions
- G.** New stainless steel, 20-gallon water tank
- H.** Control box includes variable-speed soft start, forward and reverse functionality

GP3000 ESTIMATED PRODUCTION RATES

- Mastix Removal: 1,000 square feet per hour / 305 sq m/hr
- Thin-set Removal: 1,500 square feet per hour / 457 sq m/hr
- Mil-coatings Removal: 750 square feet per hour / 229 sq m/hr
- Concrete Polishing: 2,500 square feet per hour / 762 sq m/hr

INCLUDED WITH THE GP3000

- 30 feet of power cord

RECOMMENDED ACCESSORIES

We recommend pairing your GP3000 with the DL7000 dust collector. Required Accessories with the DL7000: 403073 (QTY 1) - Hose, 76mm, 15 meters.

COUNTER-ROTATIONAL GRINDER TOOLING

PREP PACKAGES

WEDGE

SOFT CONCRETE



501020-HL

20 Grit, 2 Seg, Hard Bond, Left Hand

501040-HL

40 Grit, 2 Seg, Hard Bond, Left Hand

501070-HL

70 Grit, 2 Seg, Hard Bond, Left Hand

501020-HR

20 Grit, 2 Seg, Hard Bond, Right Hand

501040-HR

40 Grit, 2 Seg, Hard Bond, Right Hand

501070-HR

70 Grit, 2 Seg, Hard Bond, Right Hand

MEDIUM CONCRETE



501020-ML

20 Grit, 2 Seg, Medium Bond, Left Hand

501040-ML

40 Grit, 2 Seg, Medium Bond, Left Hand

501070-ML

70 Grit, 2 Seg, Medium Bond, Left Hand

501020-MR

20 Grit, 2 Seg, Medium Bond, Right Hand

501040-MR

40 Grit, 2 Seg, Medium, Bond, Right Hand

501070-MR

70 Grit, 2 Seg, Medium Bond, Right Hand

HARD CONCRETE



501020-SL

20 Grit, 2 Seg, Soft Bond, Left Hand

501040-SL

40 Grit, 2 Seg, Soft Bond, Left Hand

501070-SL

70 Grit, 2 Seg, Soft Bond, Left Hand

501020-SR

20 Grit, 2 Seg, Soft Bond, Right Hand

501040-SR

40 Grit, 2 Seg, Soft Bond, Right Hand

501070-SR

70 Grit, 2 Seg, Soft Bond, Right Hand

PUCK

SOFT CONCRETE



501025-HP

25 Grit, 4 Seg, Hard Bond

501040-HP

40 Grit, 4 Seg, Hard Bond

501080-HP

80 Grit, 4 Seg, Hard Bond

MEDIUM CONCRETE



501025-MP

25 Grit, 4 Seg, Medium Bond

501040-MP

40 Grit, 4 Seg, Medium Bond

501080-MP

80 Grit, 4 Seg, Medium Bond

HARD CONCRETE



501025-SP

25 Grit, 4 Seg, Soft Bond

501040-SP

40 Grit, 4 Seg, Soft Bond

501080-SP

80 Grit, 4 Seg, Soft Bond

POLISHING PACKAGES

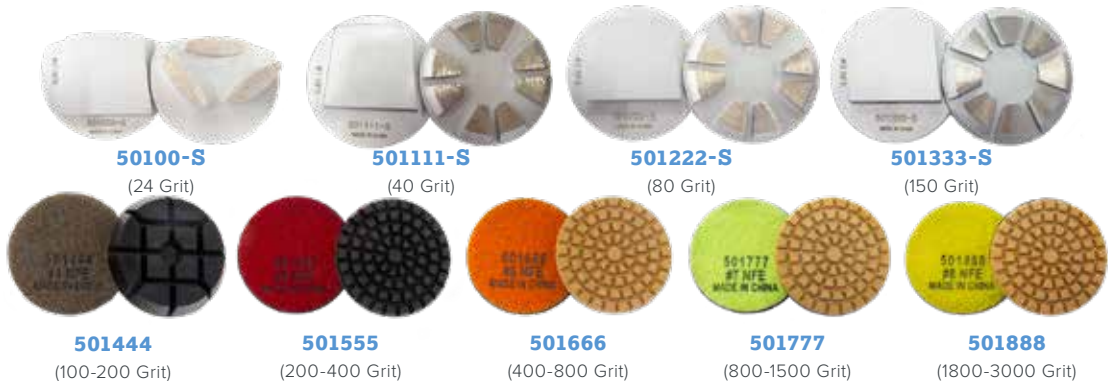
SOFT CONCRETE



MEDIUM CONCRETE



HARD CONCRETE



BONUS TOOLING



501030-2
25/30 Grit. 2 Seg



501016-10
16 Grit, 10 Seg



501030-10
30 Grit, 10 Seg



501925
Lippage Holder

403232
Quick Change Tooling Plate



501020-PCD
20 Grit, PCD



501000-PCD-L
Left Hand PCD, Rough Profile



501000-PCD-R
Right Hand PCD, Rough Profile



501926
Velcro Adapter



These high-speed burnishers produce a high-gloss finish through high-velocity continual rotations, reduced torque, and engineered pad pressure.

BURNISHERS

For the most updated information, please refer to our website, [nationalequipmentdirect.com](https://www.nationalequipmentdirect.com)

14100

ELECTRIC BURNISHER

The 14100 is a powerful, direct drive, electric burnisher that is ideal for producing a brilliant, high-gloss shine with minimal effort. This machine features a self-adjusting pad that eliminates the need to change settings or make adjustments.

14100 Specifications		
Width	20"	61 cm
Height	42"	106.7 cm
Length	24"	61 cm
Weight	70 lb	31.75 kg
RPM	1500	
HP	1.5	
Voltage	120	



SAFETY

A. Safety start push button

COMFORT

B. Floating handle for efficient operation and storage

PERFORMANCE

C. Powerful 1.5 HP belt-driven pad

BURNISHING PADS

National's burnishing pads polish concrete faster and better than any other diamond buffing pad on the market, completing work in a fraction of the time it takes larger polishing machines. Pad life exceeds 20,000 square feet, making them great for maintaining concrete.

404099

- Pad, Diamond Buffing, Green, 3000 Grit, 20", pack of 2

404100

- Pad, Diamond Buffing, 10,000 Grit, 20", pack of 1



14500

PROPANE BURNISHER



The 14500 is a propane-powered, ultra-high-speed burnisher that gives floor-care professionals the options they want to customize a machine to their needs.

14500 Specifications

Width	27"	
Weight	250 lbs	114 kg
RPM	3600 max.	
Productivity	up to 25,000 sq ft/hr	up to 2,320 sq m/hr

SAFETY

- A.** Low emissions
- B.** Safety release handle

COMFORT

- C.** Positional handle for ease of movement and transport

PERFORMANCE

- D.** Flashing battery light for ignition avoids battery depletion
- E.** Reinforced aluminum deck allows for quick and easy pad changes
- F.** Variable speed throttle

BURNISHING PADS

National's burnishing pads polish concrete faster and better than any other diamond buffing pad on the market, completing work in a fraction of the time it takes larger polishing machines. Pad life exceeds 20,000 square feet, making them great for maintaining concrete.


404101

- Pad, Diamond Buffing, Green, 3000 Grit, 27", pack of 2

404102

- Pad, Diamond Buffing, 10,000 Grit, 27", pack of 1



A person wearing jeans is using a handheld tool with a black handle and a grey body on a concrete surface. A flexible, ribbed hose is connected to the tool. The background is a plain concrete wall and floor.

National's handheld tools offer the perfect solution for small area surface preparation, edging, and hard-to-reach places.

HANDHELD TOOLS

For the most updated information, please refer to our website, nationalequipmentdirect.com

3420, 3432, 3435

HANDHELD GRINDERS



3420: 7-inch Grinder



3435: 5-inch Grinder



3432: 5-inch Variable-Speed Polisher

Available in 5-inch and 7-inch models, these electric, right-angle grinders are handheld and can be used for a variety of concrete floor preparation applications, including concrete cleaning and leveling as well as mastic, urethane, epoxy, and coatings removal.



SAFETY

- A.** Durable convertible polyurethane dust shroud enables detailed, nearly dustless edge grinding.
- B.** Works with dust collectors; attach using the 2-inch inlet port connector located on the convertible dust shroud

COMFORT

- C.** Loop handle on 3420 and 3432 creates superior control, results in fewer swirl marks, and lessens operator fatigue

PERFORMANCE

- D.** Accommodates multiple styles of diamond turbo cup wheels

Specifications:	3420		3435		3432	
Disk Size	7"	18 cm	5"	13 cm	5"	13 cm
Weight	16 lb	7.3 kg	7 lb	3.63 kg	10 lb	4.5 kg
Variable Speed	No		No		Yes	
RPM	6600		7000		700-2200	
Voltage	115		115		115	
Frequency	60 Hz		60 Hz		60 Hz	
Amps	15		12.2		10	

**Measurements are without tooling attached.*

INCLUDED WITH THE MACHINES

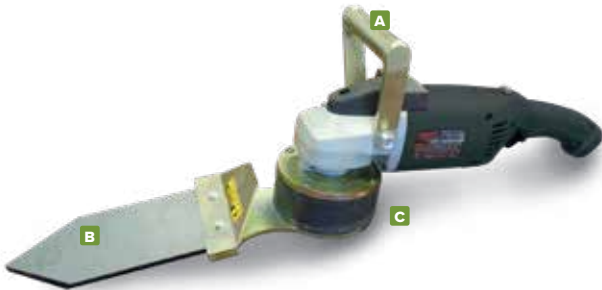
- **3420:** Includes loop handle and 3440 polyurethane convertible dust shroud
- **3435:** Includes post handle and 402252 polyurethane convertible dust shroud
- **3432:** Includes loop handle, 5-inch Velcro adapter, and 402252 polyurethane convertible dust shroud

RECOMMENDED ACCESSORIES

We recommend pairing your handheld 3420, 3435, and 3432 grinders with the DL2000 dust collector.

CONCRETE PREPARATION AND POLISHING TOOL

This machine offers you a way to prep and polish effectively into corners. This tool will work into most areas that handheld grinders do not, and it will eliminate the need to paint a border around polished rooms. Grind and polish corners, under cabinets and stairs, under railing, and around door frames.

**3535 Specifications**

Width*	6"	15 cm
Length	24"	61 cm
Weight	19 lb	8.6 kg
Variable Speed	Yes	
RPM	0-6000	
Voltage	115	
Amps	13	

**Measurements are without tooling attached.*

See accessories page for the 3535 tooling attachments.

SAFETY

A. Loop handle enables precision handling

PERFORMANCE

B. Accommodates brazed diamonds and polishing pads, from 16 to 3000 grit; supports corner work in partnership with all other National surface preparation tools

C. Variable-speed, right-angle motor powers numerous tooling options with an oscillating motion

**INCLUDED WITH THE 3535**

- Solid aluminum, diamond check-plate carrying case
- Three diamond-pad holders
- Two corner-diamond holders
- Left-hand and right-hand post tools
- Wrench

ACCESSORIES

CUP WHEELS

Industry-leading cup wheels come in various configurations and are ideal for coating removal, grinding high spots, and cleaning along walls. PCD wheels stay sharper longer under adverse conditions.

Part #	Size	Segment	Thread	RPM	Use With	Best Uses
3419	7"	12	5/8-11	8500	3420	Removes epoxies, mastics, paints, and coatings
3420-2	7"	24	7/8, 5/8 hole	8500	3420, 3425	Concrete cleaning and planing, remove thin mil sealer
3449	5"	9	7/8, 5/8 hole	13,300	3435	Remove epoxies, mastics, paints, and coatings
3450	5"	18	7/8, 5/8 hole	13,300	3435	Concrete cleaning and planing, remove thin mil sealer
3443 PCD Cup Wheel	7"	24	7/8, 5/8 hole	8500	3420, 3425	Paint grinding and removal of gummy adhesive, elastomeric, epoxy, and thin-set



3419



3420-2

402554: Spanner wrench for knockout cup wheels

402556: Spanner wrench for threaded cup wheels

3432 AND 3535 VELCRO ATTACHMENTS

Part #	Description	Best Uses
5-INCH VELCRO BRAZED DIAMONDS - HEAVY COMMERCIAL		
9235-16	16 GRIT	Remove thin epoxy, paint, stain, adhesives, and heavy sealers
9235-30	30 GRIT	Remove adhesives, heavy and light sealers
9235-50	50 GRIT	Create a "broom finish" on soft concrete surfaces; first stage to polishing concrete
9235-100	100 GRIT	Create a "broom finish" on soft concrete surfaces; first stage to polishing concrete
5-INCH VELCRO CONCRETE POLISHING PADS (USED IN SEQUENTIAL ORDER TO ACHIEVE RESULTS)		
9267-50	50 GRIT	Achieve a "no reflection" polished concrete
9267-100	100 GRIT	Follow 9267-50 to create a "little reflection" polished concrete
9267-200	200 GRIT	Follow 9267-100 to create a "moderate reflection" polished concrete
9267-400	400 GRIT	Follow 9267-200 to create a "satin reflection" polished concrete
9267-800	800 GRIT	Follow 9267-400 to create a "shine" polished concrete
9267-1500	1500 GRIT	Follow 9267-800 to create a "high shine" polished concrete
9267-3000	3000 GRIT	Follow 9267-1500 to create a "mirror" polished concrete



9235-16



9267-50

3535 TOOLING ATTACHMENTS

Corner Brazed	
9420-30	30-grit corner brazed
9420-50	50-grit corner brazed
9420-100	100-grit corner brazed

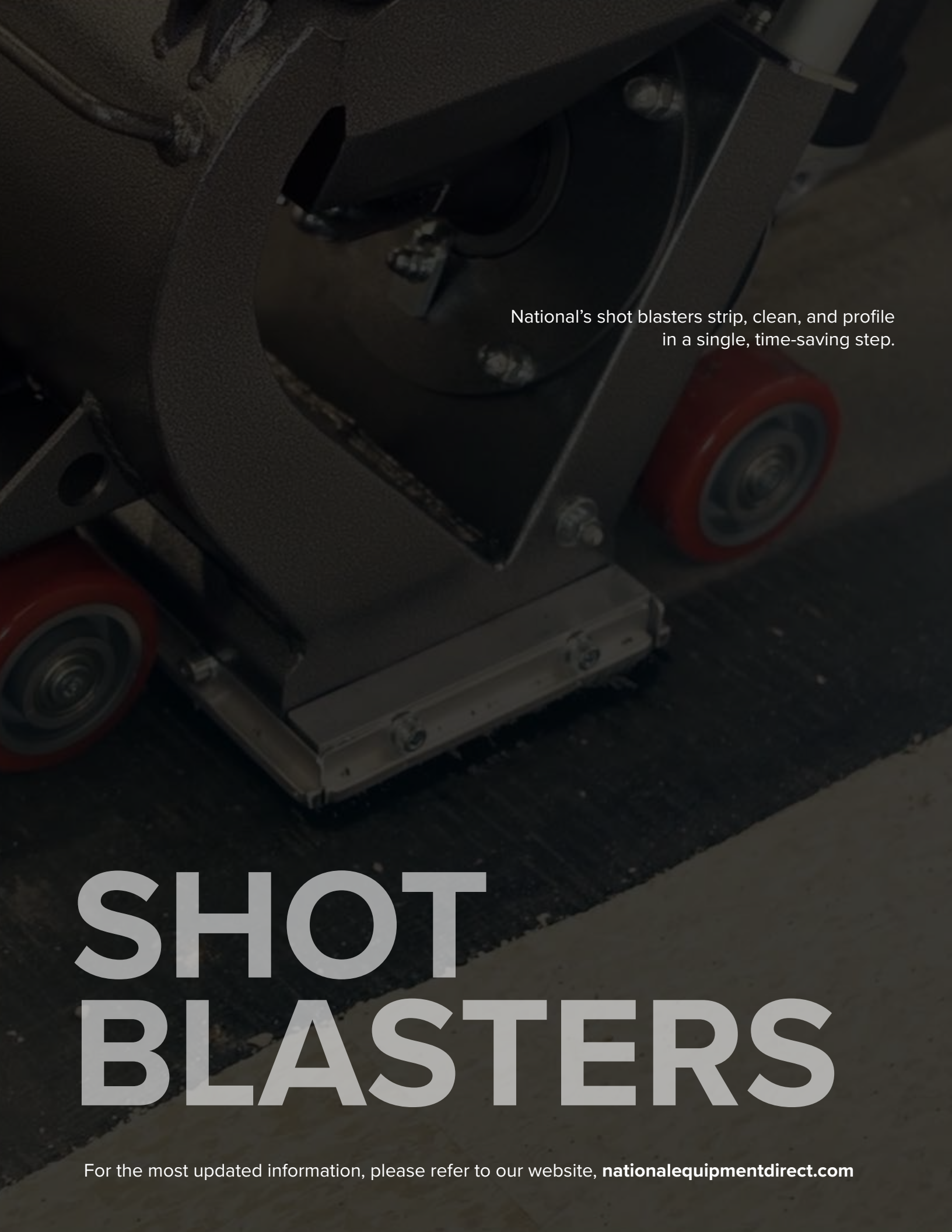


9420-30

Corner Resin	
9435-50	50-grit corner resin
9435-100	100-grit corner resin
9435-200	200-grit corner resin
9435-400	400-grit corner resin
9435-800	800-grit corner resin
9435-1500	1500-grit corner resin
9435-3000	3000-grit corner resin



9435-50



National's shot blasters strip, clean, and profile
in a single, time-saving step.

SHOT BLASTERS

For the most updated information, please refer to our website, nationalequipmentdirect.com

A95

8-INCH MANUAL SHOT BLASTER

A95-EUR, A95-UK



The A95 is the first in National's Apex® series of shot blasters. It is compact and versatile machine, ideal for small to midsize applications.

A95 Specifications		
Width	12"	30 cm
Blasting Width	8"	20 cm
Max. Height	41"	104 cm
Min. Height	34"	86 cm
Max. Length	43.4"	110 cm
Min. Length	37"	94 cm
Weight	121 lb	54 kg
Speed	Manual	
Blasting Capacity	430 sq ft/hr	
Voltage	115	
HP	1.5	1.12 kW
Amps	17	

*20A breaker required

COMFORT

- A.** Height-adjustable handle with built-in operator controls
- B.** Front swivel casters increase maneuverability and control for a more uniform and consistent profile

PERFORMANCE

- C.** Squeezing the shot valve handle starts the blast wheel while simultaneously opening the shot valve; shot valve closes and blast wheel ceases automatically when the operator is not present.
- D.** Maximizes separation of dust from the abrasive
- E.** Close-faced blast wheel design directs more steel abrasive to the surface, resulting in lower maintenance costs



PAIRED WITH THE A95

For maximum efficiency when shotblasting the A95 pairs with the DL2000 dust collector. Full specifications on page 64

ACCESSORIES

Optional accessories include the A95 shot blast kit. Refer to page 57 for a detailed list of contents.

A96

8-INCH SHOT BLASTER

A96-EUR, A96-UK

National's A96 is a variable speed, self propelled shot blaster that combines elements of traditional blasting and new innovation. The unique joystick control increases productivity and allows for more responsive handling.

A96 Specifications		
Width	13.5"	34 cm
Height	44"	112 cm
Length	57.5"	146 cm
Blasting Width	8"	20.3 cm
Weight	350 lb	159 kg
Blasting Capacity	up to 860 sq ft/hour	up to 80 sq m/hr
Voltage	230	
Amps	30	
HP	5.3 HP	



SAFETY

- A.** Hose & cord management system
- B.** Front and rear lights illuminate blasting path and work area

COMFORT

- C.** Unique joystick control allows responsive and intuitive handling
- D.** Built from durable Manganese steel that becomes stronger and more durable over time
- E.** Adjustable handle height and joystick platform allow for infinite operating positions

PERFORMANCE

- F.** Improved design moves intuitively with you when you turn
- G.** Reverse operation of this machine allows more control over positioning, direction, and line overlapping
- H.** Control bolt allows precision adjustment of control valve depending on desired CSP



PAIRED WITH THE A96

For maximum efficiency when shotblasting the A96 pairs with the DL3000P dust collector. Full specifications on page 66

ACCESSORIES

Optional accessories include the A96 shot blast kit. Refer to page 57 for a detailed list of contents.

A97

SHOT BLASTER

A97-EUR, A97-UK

National's A97 adds to our tradition of strong manufacturing. This machine combines the best aspects of our traditional shot blasting with new features designed to increase efficiency and productivity on the job. Built from the strongest Manganese steel that becomes stronger as it hardens over time.



A97 Specifications

Width	15.25"	39 cm
Height	44"	112 cm
Length	63"	160 cm
Speed	up to 2,000 sq ft/hr	up to 185 sq m/hr
Weight	430 lb	195 kg
Blasting Width	10"	25.4 cm
Voltage	230V	
Amps	30A	
HP	10	

SAFETY

- A.** Hose & cord management system
- B.** Front & rear lights illuminate blasting path and work area

COMFORT

- C.** Unique joystick control allows responsive and intuitive handling
- D.** Machine angle allows for easy edging
- E.** Built from durable Manganese steel that becomes stronger and more durable over time
- F.** Adjustable handle height and joystick platform allow for infinite operating positions

PERFORMANCE

- G.** Improved design moves intuitively with you when you turn
- H.** Reverse operation of this machine allows more control over positioning, direction, and line overlapping
- I.** Control bolt allows precision adjustment of control valve depending on desired CSP
- J.** Design is pitched slightly to the left which allows for edging within 1/8" of the wall
- K.** Integrated brake mechanism locks drive wheel for safety when machine is off



PAIRED WITH THE A97

For maximum efficiency when shotblasting the A97 pairs with the DL4000P dust collector. Full specifications on page 68

ACCESSORIES

Optional accessories include the A97 shot blast kit. Refer to page 60 for a detailed list of contents.

COMING
SOON!

A98

12-INCH SHOT BLASTER



This new shot blaster features an innovative LCD display with cloud connectivity allowing for remote troubleshooting, software updates, and operating and service manuals. Programmable by language, this display will also show your speed per minute, amp draw, and more.

A98 Specifications		
Width	18"	45 cm
Blasting Width	12"	30 cm
Height	46"	116 cm
Length	79"	200 cm
Weight	930 lb	420 kg
Speed	0-121 ft/min	0-37 m/min
Blasting Capacity	up to 656 sq ft/min	up to 200 sq m/min
Voltage	230/460	
Motor Phase	Three	

COMFORT

A. Adjustable handle height for operator comfort

PERFORMANCE

B. 7" LCD Display features smart technology for remote troubleshooting, software updates, operating and safety manuals

C. Blast wheel features replaceable blades

D. Phase rotation indication light ensure blast motor is turning in the correct direction

E. In-place drive wheel pin for drive- and free-wheel won't get lost or misplaced

SAFETY

F. Incorporates retractable hose and cord management system for cleaner operation

G. Transport mode and lift system built in

H. Integrated braking system

A30

SHOT BLASTER



This rugged and powerful machine features an over-size drive motor with an integrated brake for use on inclines and entry/exit ramps. The high productivity of this shot blaster is perfect for large jobs, including bridges, highways, parking decks, airport runways, and ship decks

A30 Specifications

Width	35"	89 cm
Blasting Width	29.5"	75 cm
Max. Height	54"	136 cm
Max. Length	77.4"	197 cm
Weight	1,587 lb	720 kg
Speed	0-98 ft/min	0-30 m/min
Blasting Capacity	up to 5,400 sq ft/hr	up to 500 sq m/hr
Voltage	480	400 V / 50Hz
Motor Phase	Three	
HP	2 x 15 kW	

SAFETY

A. Features both cord and hose management systems

COMFORT

B. Standard base transport lift for ease of mobility during transport

PERFORMANCE

C. The A30 has two powerful 15 kW motors allowing for up to 6,500 square feet per hour of production

D. Newly designed side "force liner" system protects the housing better than the competition's liners that allow gaps; the result of this new design is that the liners and blast housing last longer with less maintenance cost

E. Hopper screen tray is removable from the side of the machine



PAIRED WITH THE A30

For maximum efficiency when shotblasting the A30 pairs with the DL7000 dust collector. Full specifications on page 69. Required Accessories with the DL7000: 404597 (QTY 1) - Hose, dust collector, 150mm ID x 15m.

SHOT BLAST ACCESSORIES



6551 HEAVY-DUTY MAGNETIC SHOT SWEEPER

This sweeper is ideal for steel shot, and it picks up metal debris and easily. Includes:

- Release handle
- Height-adjustable settings of 1, 2, and 3 inches
- Wheeled construction makes it easy to push across surfaces
- 24-inch magnet, 25-inch width



6553 14-INCH MAGNETIC SHOT SWEEPER

The push-type sweeper is made with a powerful ceramic magnet and durable aluminum frame and handle. It features a 14-inch sweeping width, 6 inch wheels, and a quick release handle to make picking up nails, screws, and other metal debris easy.

- Sweeping Width: 14"
- Overall width: 15.125"
- Height: 42"
- Shipping weight: 21 lb
- Approx. lb pull: 400 lb



6552 24-INCH MAGNETIC SHOT SWEEPER

This push-type sweeper is made with a powerful ceramic magnet and durable aluminum frame and handle. It features a 24-inch sweeping width, 6-inch wheels, and a quick release handle to make picking up nails, screws, and other metal debris easy.

- Sweeping width: 24"
- Overall Width: 30.25"
- Height: 42"
- Shipping weight: 41 lb
- Approx. lb pull: 400 lb



6555 HAND MAGNET

Handheld magnet designed for loading and unloading media into shot blast machines.

A95 ACCESSORIES

- 400409: Left-side liner
- 400410: Right-side liner
- 400437: Top liner
- 400457: Front/rear brush
- 400458: Side brush
- 401868: Belt

A96 ACCESSORIES

- 405110: Left-side liner
- 405111: Right-side liner
- 400400: Top liner
- 4004392: Front brush
- 404603: Side brush
- 405010: Belt

A97 ACCESSORIES

- 404645: Left-side liner
- 404646: Right-side liner
- 404361: Top liner
- 404604: Front brush
- 404603: Side brush
- 404540: Belt

SHOT

- 3404: S-280, 50-pound bag
- 3411: S-330, 50-pound bag

WHEEL KIT

- 404330 (fits A95, A96, and A97)

REDUCERS

- 3396-201001723: Reducer, 2" blast width
- 3396-201001722: Reducer, 4" blast width
- 3396-201001721: Reducer, 6" blast width

MISCELLANEOUS

- 3477-204000590: Hose adapter
- 3398-201000494: Rear seal

SHOT BLAST ACCESSORIES



A95 Kit
Toolbox 20" x 9" x 9"
Open wrench 10 mm
Open wrench 13 mm
Universal Socket - 24 mm
Slotted screwdriver 6"
Hammer
Hex key wrench 6 mm
Safety Glasses
Blast wheel kit 165 mm
Top liner
RH liner
LH liner
Abrasive control cable
2 x Brush, side LH & RH
2 x Brush, front & rear
Wrench, open, 17 mm
Ratchet, 1/2"
Wrench, open, 11 mm

A96 Kit
Toolbox 20" x 9" x 8"
Open wrench 13 mm
Open wrench 10 mm
Open wrench 17 mm
Ratchet 1/2"
Slotted screwdriver
Hammer
Hex key 6 mm
Safety Glasses
Blast wheel kit 165 mm
Top liner
RH liner
LH liner
Side brush (2)
Front Brush
V-ribbed belt
Blast Wheel Adapter
Bottom Liner
Screw, Blast Wheel
Socket 13 mm

A97 Kit
Toolbox 20" x 9" x 8"
Open wrench 10 mm
Open wrench 13 mm
Open wrench 17 mm
Ratchet 1/2"
Slotted screwdriver
Hammer
Hex key wrench 6 mm
Safety Glasses
Blast wheel kit 165 mm
Top liner
RH liner
LH liner
RH liner (small)
LH liner (small)
Bottom liner
Side brush (2)
Front brush
Blast Wheel Adapter
Screw, Blast Wheel
Socket 13 mm

A98 Kit
Toolbox 660 x 280 x 320
Jaw wrench 10 x 11 mm
Jaw wrench 13 x 17 mm
Jaw wrench 17 x 19 mm
Jaw wrench 22 x 24 mm
Wrench insert 10 mm
Wrench insert 13 mm
Wrench insert 17 mm
Wrench insert 19 mm
Wrench insert 8 x 100 mm
Wrench insert 24 mm
Change-over ratchet
Slotted screwdriver 5.5 x 1.0 x 100
Hammer 500 Gr.
Hex key wrench 6 mm
Safety Glasses
Tune-up kit 200 mm
Top Liner
Side Liner
Abrasive control cable
Tooth belt
Brush gasket LH
Brush gasket RH
Brush gasket front
Seal gasket

SCARIFIERS

Designed for heavy-duty bulk concrete removal, coating removal, and overlayment and thin-set removal.

For the most updated information, please refer to our website, [nationalequipmentdirect.com](https://www.nationalequipmentdirect.com)

110-8

8-INCH SCARIFIER



Driven by a powerful 110 volt motor, this newly designed scarifier is ideal for removing paint, mastic, and thin set. When paired with our wood scoring drum, it is the ideal companion for any of our scrapers.

110-8 Specifications		
Machine Width	14.2"	36 cm
Milling Width	8"	20 cm
Height	36.2"	92 cm
Length	35.4"	90 cm
Weight	130 lb	59 kg
Voltage	110	
Hz	60	
Phase	Single	
RPM	2148	
Motor	2 HP	1.5 kW

*20A Breaker Required

SAFETY

A. Tubular handle includes dust collection inlet for a nearly dustless operation

B. Spring-loaded, rear-locking brake

COMFORT

C. Convenient lifting points on the front

D. Adjustable guiding grip allows work close to the wall

PERFORMANCE

E. Adjustable knob precisely aligns depth and contact pressure settings

F. Quick-change drum system; balanced drums turn at 2148 RPM for high productivity and accurate results

G. Updated motor, pulleys, and belt with improved tungsten tipped cutters



WOOD-SCORING SCARIFIER DRUM

This wood scoring drum attaches to National's scarifiers. It is an 8" drum, with three or five scoring blades. Using this on your scarifier eliminates the need to get down on your hands and knees to use a circular saw to score the wood.

- 402192: Drum with Three Blades
- 402191: Drum with Five Blades

Spartan 220

8-INCH SCARIFIER



Spartan 220 comes equipped with a specialty drum system designed to remove paint, thin mil coatings, line striping, carpet adhesives, and other refined applications.

Spartan 220 Specifications

Machine Width	14.5"	37 cm
Milling Width	8"	20 cm
Height	41"	104 cm
Length	35.4"	90 cm
Weight	125.7 lb	57 kg
Voltage	230	
Hz	60	
Phase	Single	
RPM	3440	
Motor	2.99 HP	2,2 kW

SAFETY

- A.** Tubular handle includes dust collection inlet for a nearly dustless operation
- B.** Spring-loaded, rear-locking brake

COMFORT

- C.** Convenient lifting points on the front

PERFORMANCE

- D.** Adjustable knob precisely aligns depth and contact pressure settings
- E.** Quick-change drum system; balanced drums turn at 2148 RPM for high productivity and accurate results

WOOD-SCORING SCARIFIER DRUM

This wood scoring drum attaches to National's scarifiers. It is an 8" drum, with three or five scoring blades. Using this on your scarifier eliminates the need to get down on your hands and knees to use a circular saw to score the wood.

- 402192: Drum with Three Blades
- 402191: Drum with Five Blades



SCARIFIER ACCESSORIES

Scarifier Accessories:



402166

Cutters, HMR-5.40 (kit)



402167

Washers, HMR-5.40 (kit)



402170

Cutters, TMO-7.15 (kit)



402171

Washers, TMO-7.15 (kit)



402212

Cutters, TSR-5.5 (kit)



402194

Cutters, TSR-7.5 (kit)



402195

Washers, TSR-5.5 et TSR-7.5 (kit)

402164

Belt



402173

Drum and shaft for HMT and TMO

402165 COMPLETE DRUM LOADED WITH HMR-5.40 CARBIDE 5-PIN CUTTER

- Designed for thin and hard material removal
- Applications include roughening, abrading, leveling, grooving, bulk concrete removal, high spot removal, curled joints, thick coating and overlayment removal



402168 COMPLETE DRUM LOADED WITH TMO-7.15 SOLID CARBIDE MILLING CUTTER

- Designed for the removal of thick and soft thermoplastics, line stripes, and traffic markings on concrete and asphalt

402211 COMPLETE DRUM LOADED WITH TSR-5.5 STAR WHEEL/SOLID CARBIDE

- Designed for the removal of thin and hard materials
- Applications include removal of paint, coatings, adhesive removal, plastic coatings, and dirt; light concrete preparation
- These star wheel cutters leave a "shotblasted-like" profile



402192 WOOD-SCORING SCARIFIER DRUM

This wood-scoring drum attaches to National's Spartan 220 scarifier. It is an 8-inch drum, with three scoring blades. Using this on your scarifier eliminates the need to get down on your hands and knees to use a circular saw to score the wood.

TSR CUTTERS

Steel cutters, or "TSR" cutters, are known for their versatility; they are designed to take up everything from thin mil coatings and glues to mastics, line striping, and rust off steel decks, as well as do general concrete preparation. They leave a shot-blast like profile.

TMO CUTTERS

Milling cutters, or "TMO" cutters, are designed to remove thicker, softer materials while doing minimal damage to the underlying surface. These cutters efficiently remove epoxy coatings, thermoplastics, line striping, waterproofing membranes, and general scarifying applications. TMO cutters are made of tungsten and are best applied when the underlying surface needs a very light profile.

HMR CUTTERS

Tungsten carbide cutters, or "HMR" cutters, are the workhorses of the cutter world. Commonly used for leveling high spots on concrete or asphalt, grooving concrete, tough line removal applications, sidewalk trip hazards, and stubborn thin-set removal, these cutters are most common on jobsites requiring a tough removal. HMR cutters will leave a rough profile on concrete, and will last longer than standard steel cutters.

National offers the industry's widest selection of machines to control and collect dust. Ideal for use on any jobsite, they contain and collect powder, wood dust, concrete dust, and many other worksite by-products creating a safer work environment for all.

DUST CONTROL & DUST COLLECTORS

For the most updated information, please refer to our website, nationalequipmentdirect.com



Ion1K, Ion4K™

CLEAN AIR COMPANION



National's series of ionizers are compact machines that electronically charge the air in the room, driving dust and other contaminants rapidly to the ground in a manner that is safe for the user and the environment. They operate with little input from the user so you can spend more time focusing on the task at hand.

This machine does not produce ozone.

SAFETY

- A. Locking caster wheels
- B. Pre filter and main filter protect internal components of machine

PERFORMANCE

- C. Multi-speed fan flexible for varying jobsites
- D. Simple control panel
- E. Sturdy handles for easy transportation



Specifications	Ion1K		Ion4K™	
Width	14.5"	37 cm	20.5"	52 cm
Height	19.7"	50 cm	28.7"	73 cm
Length	22.8"	58 cm	25.2"	64 cm
Weight	40 lb	18 kg	132.3 lb	60 kg
Power	220 W, Single Phase		300 W, Single Phase	
Capacity	up to 15,000 ft cubed		up to 53,000 ft cubed	

ACCESSORIES

- 404937: Pre-Filter
- 404938: Framed Pre-Filter
- 404939: Main Filter

DL2000

DUST COLLECTOR

DL2000-JPN, DL2000-UK



The new DL2000 is precisely engineered, contractor tested, and designed with the highest control calibrations on rugged steel frames with washable integrated filters. These filters are simple to maintain and reinforced in a sturdy float-and-flow system. The dust collector exceeds HEPA standards and is equipped with a Longopac bagging system.

DL2000 Specifications

Width	20"	50 cm
Height	47"	120 cm
Length	22"	56 cm
Weight	121.6 lb	55.2 kg
Voltage	115	100/110V
Frequency	60 Hz	50/60 Hz
Vacuum Pressure	88.6" H ₂ O	2.5 m H ₂ O
Air Movement	235 CFM	400 m ³ /h
Filter Area	32.3 sq ft	30,000 sq cm
Filter Efficiency	99.995 @ .14 microns	
Noise Emission (dBA)	74	
Inlet	2"	50 mm

SAFETY

- A. Individually tested HEPA filter with a minimum efficiency of 99.995 percent at 0.14 microns; a rugged steel frame provides support during transport and use
- B. Heavy-duty, anti-static collection hose provides durability and safety

PERFORMANCE

- C. Primary filter
- D. State-of-the-art telescoping side arms for a highly portable machine that can be packed away easily for storage, or expanded for use

INCLUDED WITH THE DL2000

- 402494: Inlet slide damper, OD 1.97"
- 402517: Hose connector 40 mm
- 402519: Hose adapter 50 mm
- 402520: Hose reducer 50 mm - 38 mm
- 402522: Hose adapter 38 mm
- 402523: Floor wand, 38 mm
- 402524: Floor brush, 38 mm
- 402518 Antistatic PVC hose d. 50 mm, 7.5 m
- 402521 Antistatic PVC hose d. 38 mm, 7.5 m
- Operating and Service Manuals

RECOMMENDED ACCESSORIES

- 402473 Longopac bagging system replacement.
- 402467 Primary filter
- 402471: HEPA filter

DLS2000 : PRE-SEPARATOR

Capture the majority of dust and debris prior to it reaching your dust collector filters. This unique addition greatly extends the life of your dust collector filters and allows for extended running time, increasing your production while saving money and time on filter replacement. Designed on casters so that it can easily move with your surface preparation equipment.



DL3000

DUST COLLECTOR

DL3000-UK, DL3000-EUR



The DL3000 is precisely engineered and designed calibrations on rugged steel frames with washable integrated filters. These filters are simple to maintain and reinforced in a sturdy float-and-flow system. Equipped with a Longopac bagging system, the DL3000 exceeds HEPA standards. This new age of dust control power is another display of our dedication to you and your valuable assets.

DL3000 Specifications		
Width	25.6"	65 cm
Height	63"	160 cm
Length	31"	80 cm
Weight	154.32 lb	70 kg
Voltage	230	
Phase	Single	
Frequency	50-60 Hz	
Vacuum Pressure	98.4" H ₂ O	2.5 m H ₂ O
Air Movement	353 CFM	600 m ³ /h
Filter Area	32.3 sq ft	30,000 cm ²
Filter Efficiency	99.995 @ .14 microns	
Noise Emission (dBA)	75	
Inlet	3.15"	80 mm

SAFETY

A. Included with the machine is an individually tested HEPA filter with a minimum efficiency of 99.995 percent at 0.14 microns; a rugged steel frame provides support during transport and use

PERFORMANCE

B. Primary filter

C. Heavy-duty, anti-static collection hose provides durability and safety

INCLUDED WITH THE DL3000

- 402519: Hose adapter 50 mm
- 402525: Hose adapter, 80 mm - 50 mm
- 402526: Hose connector 76 mm
- 402528: Floor wand, 50 mm
- 402529: Floor brush, 50 mm
- 402518 Antistatic PVC hose d. 50mm, 7.5m
- 402521 Antistatic PVC hose d. 38mm, 7.5m
- Operating and Service Manuals

RECOMMENDED ACCESSORIES

- 402473 Longopac bagging system replacement. Sold in a 4-pack
- 402469 Primary Filter

DLS3000: PRE-SEPARATOR

Capture the majority of dust and debris prior to it reaching your dust collector filters. This unique addition greatly extends the life of your dust collector filters and allows for extended running time, increasing your production while saving money and time on filter replacement. Designed on casters so that it can easily move with your surface preparation equipment.



DL3000P

DUST COLLECTOR



The DL3000P offers the great features of the DL3000 with the added benefit of a reverse pulse compressor. The reverse pulse compressor helps maintain a cleaner filter resulting in less downtime on jobsites.

DL3000P Specifications

Width	35.8"	91 cm
Height	69"	176 cm
Length	25.6"	65 cm
Weight	309 lbs	140 kg
Voltage	230V	
Phase	Single	
Hz	50/60	
Vacuum Pressure	98.4" H ₂ O	2.5 m H ₂ O
Air Movement	318 CFM	540 m ³ /h
Filter Area	61.4 sq ft	57,000 cm ²
Filter Efficiency	99.995 @ .14 microns	
Noise Emission (dBA)	76 dB	
Inlet	3.15"	80 mm

SAFETY

A. Included with the machine is an individually tested HEPA filter with a minimum efficiency of 99.995 percent at 0.14 microns; a rugged steel frame provides support during transport and use

PERFORMANCE

B. Primary filter

C. Heavy-duty, anti-static collection hose provides durability and safety

D. Reverse pulse compressor allows continual operation of the machine

INCLUDED WITH THE DL3000P

- 402519: Hose adapter 50 mm
- 402525: Hose adapter, 80 mm - 50 mm
- 402526: Hose connector 76 mm
- 402528: Floor wand, 50 mm
- 402529: Floor brush, 50 mm
- 402518 Antistatic PVC hose d. 50mm, 7.5m
- 402521 Antistatic PVC hose d. 38mm, 7.5m
- Operating and Service Manuals

RECOMMENDED ACCESSORIES

- 402473 Longopac bagging system replacement. Sold in a 4-pack
- 402469 Primary Filter

DLS3000: PRE-SEPARATOR

Capture the majority of dust and debris prior to it reaching your dust collector filters. This unique addition greatly extends the life of your dust collector filters and allows for extended running time, increasing your production while saving money and time on filter replacement. Designed on casters so that it can easily move with your surface preparation equipment.



DL4000

DUST COLLECTOR



National's DL4000 combines the sturdy construction of the DL3000 with a pass-through junction box, allowing additional equipment to be connected. Equipped with a Longopac bagging system, this machine exceeds HEPA standards.

DL4000 Specifications

Width	25"	63.5 cm
Height	63.21"	160 cm
Length	38.7"	98 cm
Weight	260 lb	118 kg
Voltage	230	
Phase	Switchable single or three phase outlet	
Hz	60	
Vacuum Pressure	98.4" H ₂ O	2.5 m H ₂ O
Air Movement	318 CFM	540 m ³ /hr
Filter Area	32.3 sq ft	30,000 sq cm
Filter Efficiency	99.995 @ .14 microns	
Noise Emission (dBA)	76	
Inlet	3.15"	80 mm

SAFETY

A. Included with the machine is an individually tested HEPA filter with a minimum efficiency of 99.995 percent at 0.14 microns; a rugged steel frame provides support during transport and use

PERFORMANCE

B. Primary filter

C. Heavy-duty, anti-static collection hose provides durability and safety

D. Pass through junction box to power additional equipment.

E. Adjustable CFM for different machines by opting to use one, two or three motors

INCLUDED WITH THE DL4000

- 402519: Hose adapter 50mm
- 402525: Hose adapter, 80mm - 50mm
- 402526: Hose connector 76mm
- 402528: Floor wand, 50mm
- 402529: Floor brush, 50mm
- 402518 Antistatic PVC hose d. 50mm, 7.5m
- 402521 Antistatic PVC hose d. 38mm, 7.5m
- Operating and Service Manuals

RECOMMENDED ACCESSORIES

- 402473 Longopac bagging system replacement.
Sold in a 4-pack
- 402472 Hepa Filter
- 402469 Primary filter

DL4000P

DUST COLLECTOR



The DL4000P offers the great features of the DL4000 with the added benefit of a reverse pulse compressor. The reverse pulse compressor helps maintain a cleaner filter resulting in less downtime on jobsites.

DL4000P Specifications

Width	25"	63.5 cm
Height	63.21"	160 cm
Length	38.7"	98 cm
Weight	385.8 lbs	175 kg
Voltage	230	
Phase	Switchable single or three phase outlet	
Hz	50/60	
Vacuum Pressure	98.4" H ₂ O	2.5 m H ₂ O
Air Movement	318 CFM	540 m ³ /hr
Filter Area	32.3 sq ft	30,000 sq cm
Filter Efficiency	99.995 @ .14 microns	
Noise Emission (dBA)	76	
Inlet	3.15"	80 mm

SAFETY

A. Included with the machine is an individually tested HEPA filter with a minimum efficiency of 99.995 percent at 0.14 microns; a rugged steel frame provides support during transport and use

PERFORMANCE

B. Primary filter

C. Heavy-duty, anti-static collection hose provides durability and safety

D. Pass through junction box to power additional equipment.

E. Adjustable CFM for different machines by opting to use one, two or three

F. Reverse pulse compressor allows continual operation of the machine motors

INCLUDED WITH THE DL4000P

- 402519: Hose adapter 50mm
- 402525: Hose adapter, 80mm - 50mm
- 402526: Hose connector 76mm
- 402528: Floor wand, 50mm
- 402529: Floor brush, 50mm
- 402518 Antistatic PVC hose d. 50mm, 7.5m
- 402521 Antistatic PVC hose d. 38mm, 7.5m
- Operating and Service Manuals

RECOMMENDED ACCESSORIES

- 402473 Longopac bagging system replacement. Sold in a 4-pack
- 402472: Hepa Filter
- 402469 Primary Filter

DL7000

DUST COLLECTOR



The DL7000 was specifically designed to pair with National's largest shot blasters and grinders. Equipped with an auto-pulse cleaning system, quick access points for filter changes, and the industry's highest rated HEPA filters, this dust collector is built for your toughest jobs.

DL7000 Specifications		
Width	34"	86 cm
Height	60"	158.9 cm
Length	72"	181.4 cm
Weight	992 lb	450 kg
Voltage	230V/460V Auto-Switching	
Phase	3	
Hz	60	
Vacuum Pressure	24" H ₂ O	61 cm H ₂ O
Air Movement	941 CFM	1,600 m ³ /h
Filter Area	72 ft sq (primary) 26 ft sq (HEPA)	22 m sq (primary) 8 m sq (HEPA)
Filter Efficiency	99.95 @ .18 microns	
Inlet	5.9"	150 mm

SAFETY

A. HEPA filter guarantees filtration of the smallest particles

PERFORMANCE

B. 2 anti-static, polyester cartridge filters help reduce clogging when picking up high quantities of dust, while maintaining minimal operating cost

C. Continuous auto pulse cleaning system features an integrated compressor, controlled by an internal timer, cleans each cartridge intermittently

D. The machine features sturdy steel construction and pivoting wheels with a braking system for optimal safety and maneuverability

E. All components of the dust collector are protected by the frame

F. Blower operates with minimal noise

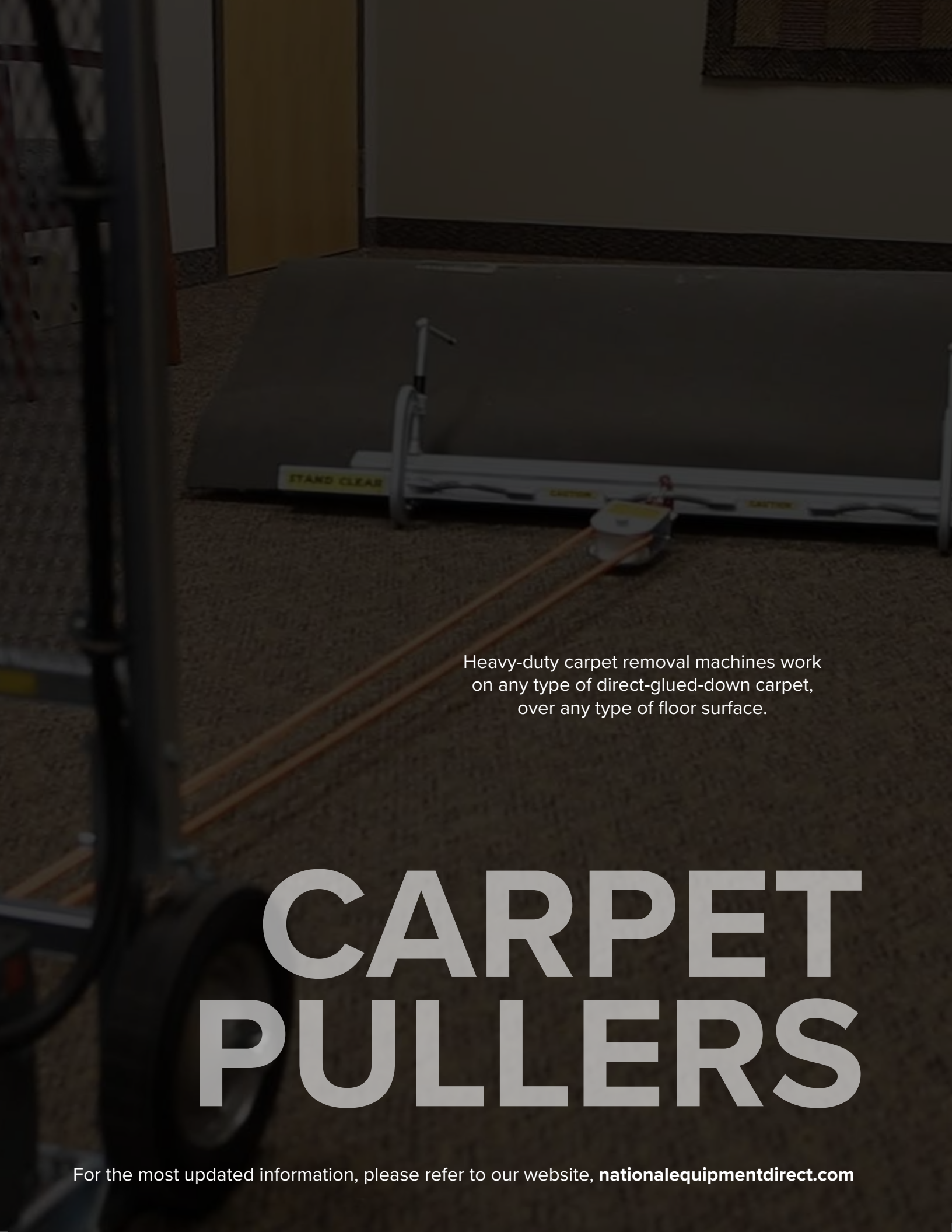
G. Convenient side access allows for quick filter changes

INCLUDED WITH THE DL7000

- Inlet 76mm (QTY 1)
- Inlet 130mm (QTY 1)
- Inlet 150mm (QTY 1)
- Rolling dust bin (QTY 1)

OPTIONAL ACCESSORIES

- 403073: Hose, 76mm, 15 meters
- 404596: Hose, Dust Collector, 130mm ID x 15m
- 404597: Hose, Dust Collector, 150mm ID x 15m
- 404719: Clamp, Hose, 5-7"
- 403940: Clamp, Hose, 3", Metal
- 404763: Kit, Blast Gate, 76mm
- 404756: HEPA Filter

A heavy-duty carpet removal machine is shown in a room with carpeted floors. The machine is white and grey, with two long orange straps attached to it. A yellow label with the text "STAND CLEAR" is visible on the machine. The machine is positioned on the carpet, and the straps are extending across the floor towards the bottom left of the frame. The background shows a doorway and a wall.

Heavy-duty carpet removal machines work
on any type of direct-glued-down carpet,
over any type of floor surface.

CARPET PULLERS

For the most updated information, please refer to our website, nationalequipmentdirect.com

71

POWERED CARPET PULLER



This heavy-duty machine automatically locks into any existing direct-glued-down carpet and works over any type of floor surface. It is quieter than a floor scraper machine, can withstand the abuse of day-in/day-out commercial use, and is easy to use on any jobsite.

SAFETY

A. One-person operation; recognized by insurance companies to reduce workers compensation

PERFORMANCE

B. Sets up to pull carpet in seconds, reducing labor costs; quick shaft disengagement for fast re-hooking

C. High-polymer, low stretch cord for safer winch application

D. Strongest pull bars in the industry; shark-toothed base gripper teeth for super holding power on flat carpet

INCLUDED WITH THE 71

- 71-2: 46-inch pull bar
- Instruction manual

72

HIGH-POWERED CARPET PULLER



The 71 and 72 carpet pullers offer patented technology and are recognized by insurance companies to reduce workers compensation.

PERFORMANCE

A. Pulls carpet up to 12 feet wide at one time; in most cases good are reusable for relay or sale

B. Slow start for greater control; reduces likelihood of tripping circuit breakers; integrated control switches; troubleshoots most electrical problems with LCD default display

C. Strongest pull bars in the industry

INCLUDED WITH THE 72

- 71-2: 46-inch pull bar
- Instruction manual

71 Specifications		
Width	29.5"	75 cm
Height	42" with screen 10" screen folded	107 cm with screen 25 cm screen folded
Length	34"	86 cm
Weight	185 lb	83.9 kg
Speed	15-22 ft/min	4.6-6.7 m/min
HP	1	0,745 kW
Voltage	115/230 (60 Hz Only)	

72 Specifications		
Width	29.5"	75 cm
Height	42" with screen 10" screen folded	107 cm with screen 25 cm screen folded
Length	34"	86 cm
Weight	190 lb	86.2 kg
Speed	up to 30 ft/min	up to 9.1 m/min
HP	1.5	1.1 kW
Voltage	115/230 (60 Hz Only)	

ACCESSORIES

- 71-1: 1-foot optional pull bar
- 71-P33: Replacement puller rope (3/8-inch diameter x 50 feet)
- 71-P8: Replacement gripper strip (5 strips required per base)



YOUR CLEAN AIR COMPANION

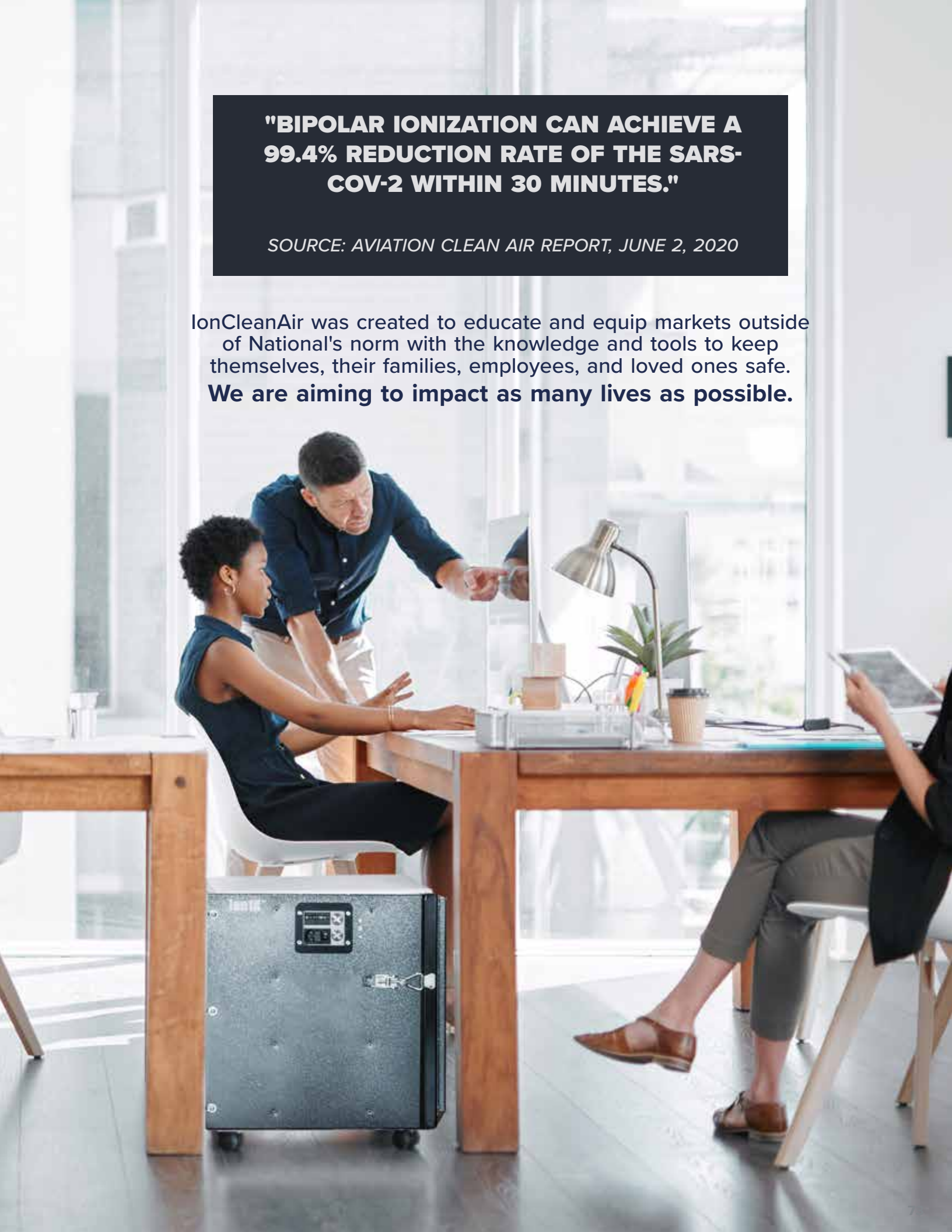
When we introduced Ionizers at the 2019 World of Concrete we saw them as an ideal solution for removing dust from the air on jobsites. Through the course of the last 12 months, this technology has provided solutions for removing diseases, pathogens, and allergens from the air.



**"BIPOLAR IONIZATION CAN ACHIEVE A
99.4% REDUCTION RATE OF THE SARS-
COV-2 WITHIN 30 MINUTES."**

SOURCE: AVIATION CLEAN AIR REPORT, JUNE 2, 2020

IonCleanAir was created to educate and equip markets outside of National's norm with the knowledge and tools to keep themselves, their families, employees, and loved ones safe. **We are aiming to impact as many lives as possible.**







A WORLDWIDE PRESENCE



Made in America Since 1968

Industry-leading products proud to be
MADE IN AMERICA SINCE 1968

nationalequipmentdirect.com

Toll-Free: 800.245.0267 | Local: 763.315.5300 | Fax: 800.648.7124

9250 Xylon Ave N
Minneapolis, MN 55445

8835 W 116th Circle, Unit F
Broomfield, CO 80021

6th Floor, 2 Grand Canal Square
Dublin 2

***European stocking facility in the Netherlands