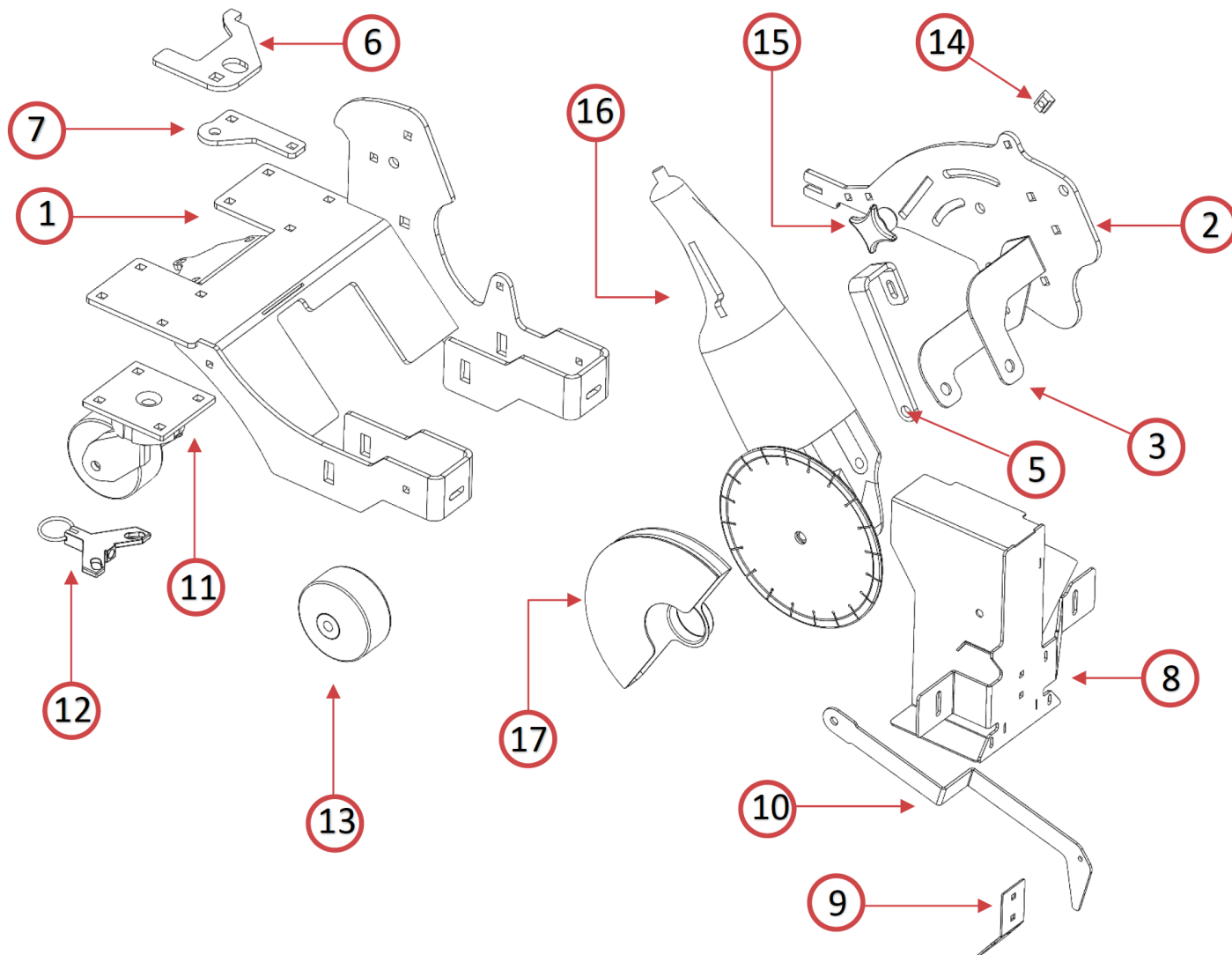


# GorillaConcreteTools

## GCT-9 Silverback

### Product Manual





Part number	Description
9 - 1	GCT-9 Saw Base
9 - 2	Pivot Plate
9 - 3	Grinder Mounting Bracket
9 - 4	Alternative Grinder Mounting Bracket (Not Pictured)
9 - 5	Grinder Support Bracket
9 - 6	Foot Lock
9 - 7	Foot Lock Mounting Bracket
9 - 8	Dust Box
9 - 9	Dust Deflector mount
9 - 10	Rubber Dust Deflector (Not Pictured)
9 - 11	Caster Wheel
9 - 12	Caster Wheel Lock
9 - 13	Front Wheel
9 - 14	Depth Stop T-Nut
9 - 15	4-Arm Knob
9 - 16	Grinder
9 - 17	Blade Guard
9 - 18	Pivot Plate Tensioning Spring (Not Pictured)
9 - 19	Lift/Lower Arm (Not Pictured)

# Product Set-Up

## Warnings!

*These instructions are only intended to show you the set-up of our saw.*

*Do not use until you have been trained on how to properly operate a walk behind concrete saw.*



Stay clear of others while in operation.  
Debris can fly from blade area.  
Eye and face protection required.



Respirator required.  
Operate in well ventilated area.



Ear protection required.

### Set-Up: Figure 1

1. Install the control and lift handles as shown.
2. Lightly wrap the cord around the cord holder. **DO NOT** overtighten the cord as this may cause premature wear to the outer shield.
3. Plug the grinder into the remote power box.

***Never leave the unit plugged in while unattended or while replacing the blade.***

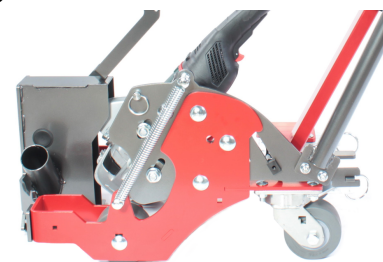


**Figure 1**

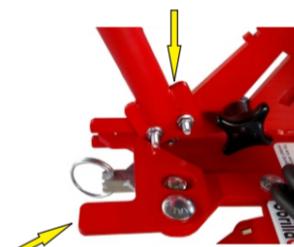
### Features: Figure 2

- **Blade Adjustment Knob:** slide the knob left or right to set the blade depth limit.
- **Locking Pin:** insert locking pin into **position 2** when the saw is in use. When the saw is not in use make sure to lift the motor and insert the locking pin into **position 3**. This locks the motor in the up position for transportation.

**Figure 2**



**Figure 3**



### Foot Lever: Figure 3

The foot level is for **temporary** use only, do not use for transportation or extended periods of time.

### Dust Control Features: Figure 4

1. Adjust the guard to maintain minimal ground clearance to achieve optimal dust control.
2. Connect your vacuum hose to the 2" dust port - a minimum of 300 CFM vacuum is required.

**Figure 4**



### Crack Chasing Mode



### Straight Cut or Transport Mode

