

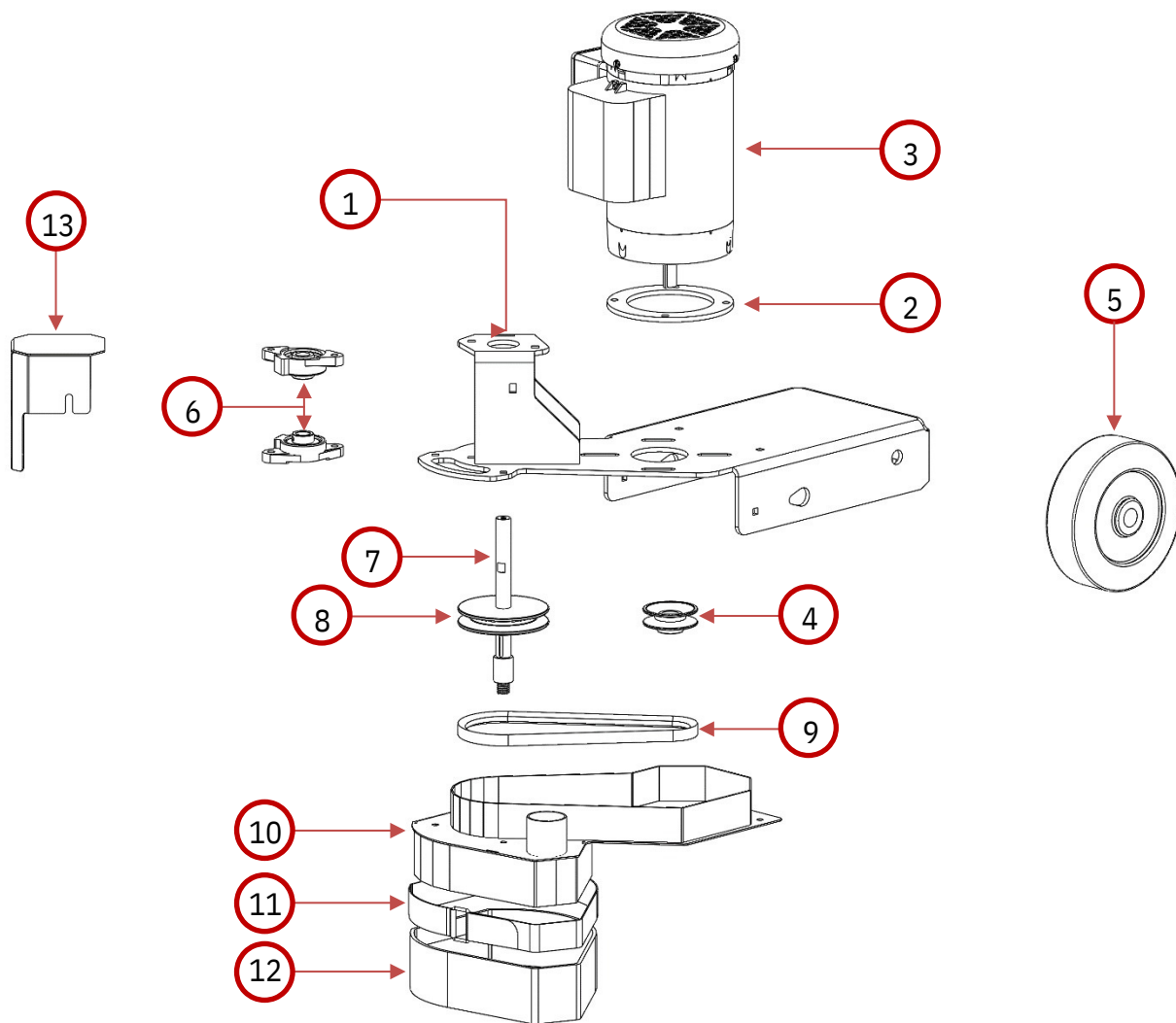
GorillaConcreteTools

SG-8

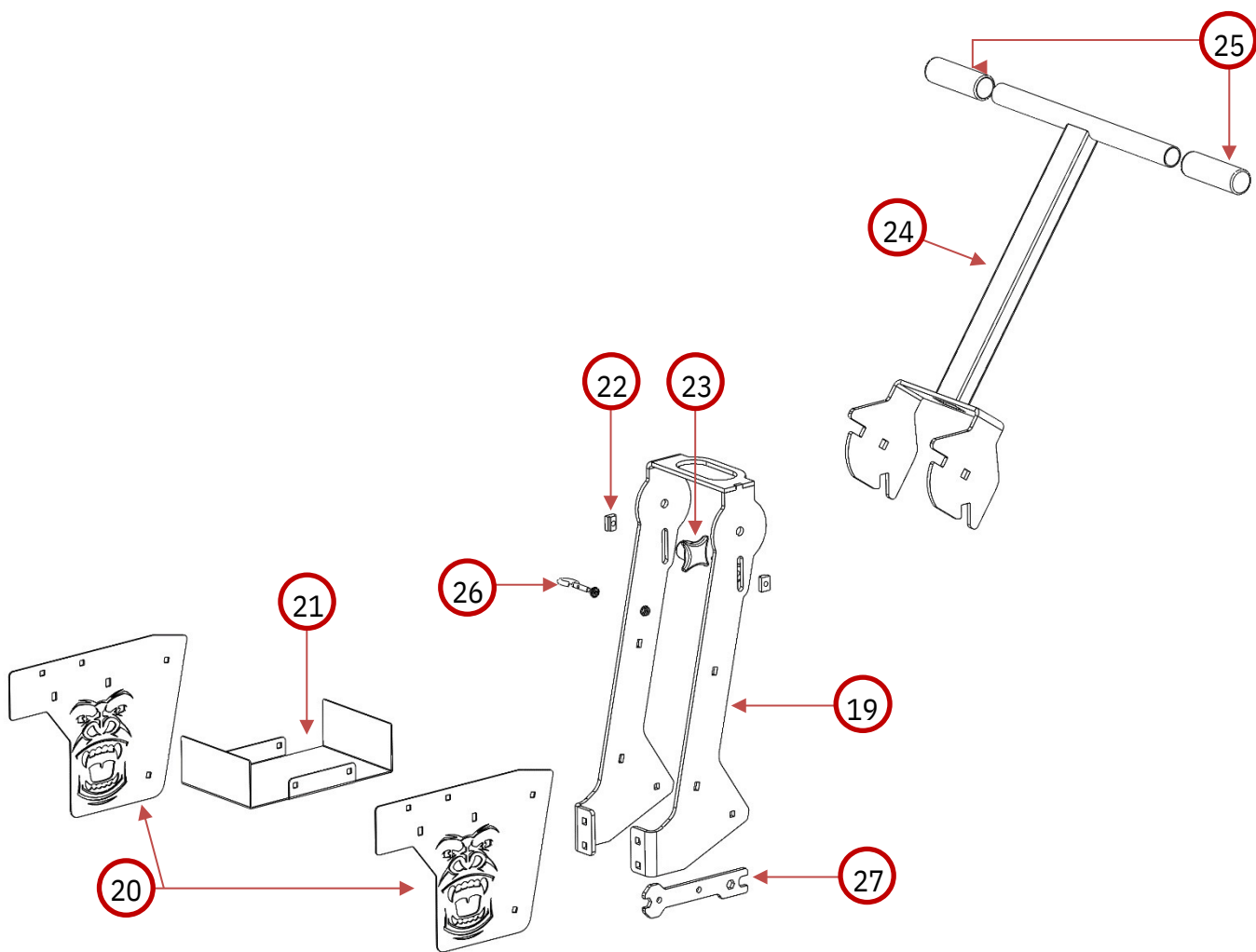
Product Manual



Parts Diagram



Part #	Description
SG8 – 1	Surface Grinder Main Base
SG8 – 2	Motor Mounting Plate
SG8 – 3	Drive Motor
SG8 – 4	Drive Pulley
SG8 – 5	8" Non-Marking Wheels
SG8 – 6	Drive Shaft Bearing
SG8 – 7	Drive Shaft
SG8 – 8	Driven Pulley
SG8 – 9	Drive Belt
SG8 – 10	Dust Shroud
SG8 – 11	Dust Skirt Retention Strap
SG8 – 12	Dust Skirt
SG8 – 13	Shaft Cover
SG8 – 14	Self-Leveling Orbital 7" Pad Driver (Not Shown)
SG8 – 15	Self-Leveling Tapered Tool Holder (Not Shown – Specify Type)
SG8 – 16	Self-Leveling RP Tool Holder



Part #	Description
SG8 – 19	Handle Upright
SG8 – 20	Tool Tray Sides
SG8 – 21	Tool Tray Main
SG8 – 22	T-Slot Nut
SG8 – 23	4-Arm Knob
SG8 – 24	Handle
SG8 – 25	Handle Grip
SG8 – 26	Eye Bolt Fastener Set
SG8 – 27	Shaft/Multi-use Wrench
SG8 – 28	Power Cord and Switch Assembly (Not Shown)

Product Set-Up

Warnings!

This Saw is made for outdoor use only

*Follow the engine manufactures manual prior to saw set-up.
These instructions are only intended to show you the set-up of our saw.
Do not use until you have been trained on how to properly operate a walk behind concrete saw.*



Stay clear of others while in operation. Debris can fly from blade area. Eye and face protection required.



Respirator required. Operate in well ventilated area.



Ear protection required.

Tool Installation: Figure 1

1. With the handle in the down position and the grinding head in the forward or unlocked position, tilt the unit backward onto the points shown in Fig. 1 (blue arrows).
2. Using the supplied blade wrench on side of built in tool storage (green arrow), lock the shaft in place by inserting the blade wrench through the shaft cover (yellow arrow).
3. Install tooling and tighten.
4. Lower the machine back down to the operation position in Figure 1.



Figure 1

Never leave the unit plugged in while unattended, servicing, or replacing tooling.

Set-Up: Figure 2

1. Loosen the knobs and position the handle as shown in Fig. 2. (orange arrow)
2. Slide the square nut and handle into the locking position to ensure that the handle stays in place then tighten.
3. Adjust the dust skirt on the dust shroud so that it is touching the cutting surface. Simply loosen the cinch strap and move the skirt up or down then tighten the cinch strap. (red arrow)



Figure 2